



# Revolutions<sup>©</sup>



*The Newsletter of the South Plains Woodturners*

**AAW** | AMERICAN ASSOCIATION  
OF WOODTURNERS

Vol. 13, No. 5

May, 2019



## *SPW Turns 13*

Thirteen years ago in June, I attended the inaugural meeting of SPW. Watching the development of our association has been an amazing journey. Many people have spent countless hours for the benefit of our group. I am thankful we have the opportunity to fellowship and learn from each other. Since our club year begins in June, remember to renew your membership by paying your dues!

During the summer months, there are several additional opportunities to take advantage of. We will have a beginner class running from May 30<sup>th</sup> – June 27<sup>th</sup> at the Garden and Arts Center. Mentoring a beginning turner can vastly improve your turning skills. We currently have 7 registered for this class, so we need plenty of help. The intermediate class will begin July 18<sup>th</sup> and conclude August 15<sup>th</sup>. There are

still slots available during this session, so if you are aware of anyone who wants to enroll, have them call the Garden and Arts Center and get their name on the list.

My personal highlight of the summer time is attending *SWAT*! The \$140 registration fee allows you to attend 9 demonstrations with 7 offerings during each rotation. Lunches for all three days are included! Access to the vendors who attend allows you a smorgasbord of items from tools to amazing wood! The instant gallery can provide a multitude of inspirations for your next turning adventure. The dates for this year's extravaganza are August 23 – 25. You can register to attend at <http://www.swaturners.org/>

The family of Lee Roberts has asked for assistance in selling his tools. We will have these available for purchase at our monthly meetings. The club is purchasing his lathe and air filtration system for class use.

Over the course of our history, I can count at least 4 different locations where we have conducted meetings. Our June meeting will be in the conference room at the Mahon Library next door to the Civic Center. Colin Chambers from the Panhandle Club will be the demonstrator. Our July meeting is tentatively scheduled to occur at the Groves Branch Library on 19<sup>th</sup> near LCU.

–Jim Bob

**NEXT MEETING: 9:30AM–12Noon, Saturday, June 1, 2019,**

**Mahon Library, 1306 9th St., Lubbock, just east of the Civic Center.**

**Demonstrator: Colin Chambers, “Natural-Edged Bowl with Carved Feet, Using the Hook Tool.”**

**(Why don't YOU consider demonstrating at a future meeting?)**

**South Plains Woodturners Officers**

President	Jim Bob Burgoon jbburgoon@gmail.com
Past President	Harry Hamilton allskewedup@gmail.com
1st Vice President	Kent Crowell kcrowell56@gmail.com
2nd Vice President	David Turner turnerdc@sbcglobal.net
Secretary	Scot Goen scot.goen@gmail.com
Treasurer	Ron Pedersen lubbockrpr@team-psc.com
Member at Large	Robert Davis roberth.davis@suddenlink.net
Member at Large	Larry Morgan morganla73@yahoo.com
Member at Large	Ken Romines kromines@gmail.com

<https://southplainswoodturners.weebly.com/>

Revolutions© is the newsletter for the South Plains Woodturners, Inc., a non-profit organization dedicated to promoting the craft and art of woodturning.

Revolutions© is published monthly at Lubbock, TX. Mailing Address:

P. O. Box 65428, Lubbock, TX 79464

The South Plains Woodturners is affiliated with the [American Association of Woodturners](#), the [Southwest Association of Turners](#), and the [Lubbock Arts Alliance](#).

Please direct any questions or comments to the editor:  
Edward "Special Ed" Spence 806-252-8816  
edwardthepurple@gmail.com

**Club Calendar**

6/1/2019 June Club Meeting

**Mahon Library!!!**

(We have a conflict with another event for our usual meeting place.)

*Stay turned for details on the July meeting!*

AAW Symposium, Raleigh, NC  
7/11 to 7/14 2019

SWAT, Waco, TX 8/23 to 8/25 2019

Intermediate Class: July 18, July 25,  
August 1, Aug. 8, Aug. 15



SWAT Symposium 2019  
August 23 - 25 2019



**Raleigh 2019**

AAW | AMERICAN ASSOCIATION OF WOODTURNERS

Lubbock, Texas is so flat that if you stand on a penny you can see Dallas!





May Raffle

We need 1 or 2 early bird Greeters / set up crew ( 8:00 AM) to help Kent at the welcome table to sign in members and guests & develop the roster. This job could be done by a wife or relative. Members will simply find their name and make a check mark by their info. Should take 5 seconds. If we don't have the member listed, they can enter on a paper, smart phone or Kent's Laptop. Guests are asked to help us with a guest log book. The Chairperson will be able to read off the guests & info at the start of the meeting.

Welcome



Members & Guests  
Please Sign In



Your participation in the Raffle helps pay for the building, coffee, and snacks.



"Ooooo, red velvet donuts!"



"What??? No winning tickets?"



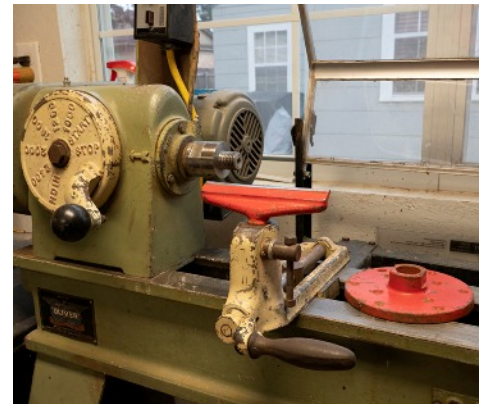




**Gordon Graves** brought 10 grinding discs, courtesy of Wood Turners Wonders, who had given that number to every club in the SWAT region. They were available to members in exchange for a donation to the SPW building fund. In case you're wondering: no, there aren't any left.

### Lathe for Sale

Buddy Chesser is selling his **Oliver 159-A** 110V 12" Lathe with accessories. It has a 5' bed and a rebuilt motor with only 6 hours on it since the rebuild. The headstock moves to the foot of the bedways to facilitate outboard turning. The spindle is 1-1/8" x 8, and a 1"x 8 adapter is included, as are 3 faceplates and a Lexar shield. **Price lowered to \$700.** Email him at [lubbockcc@gmx.us](mailto:lubbockcc@gmx.us), call him at **806-548-0694**, or see him at the meeting.



### Air Compressor for Sale

Ingersoll Rand, new, \$400

Jeff McKinnon  
806-778-2748

[jeff@alaserstouch.com](mailto:jeff@alaserstouch.com)



**May Demo: Jim Burt, “Table Saw Techniques”.**

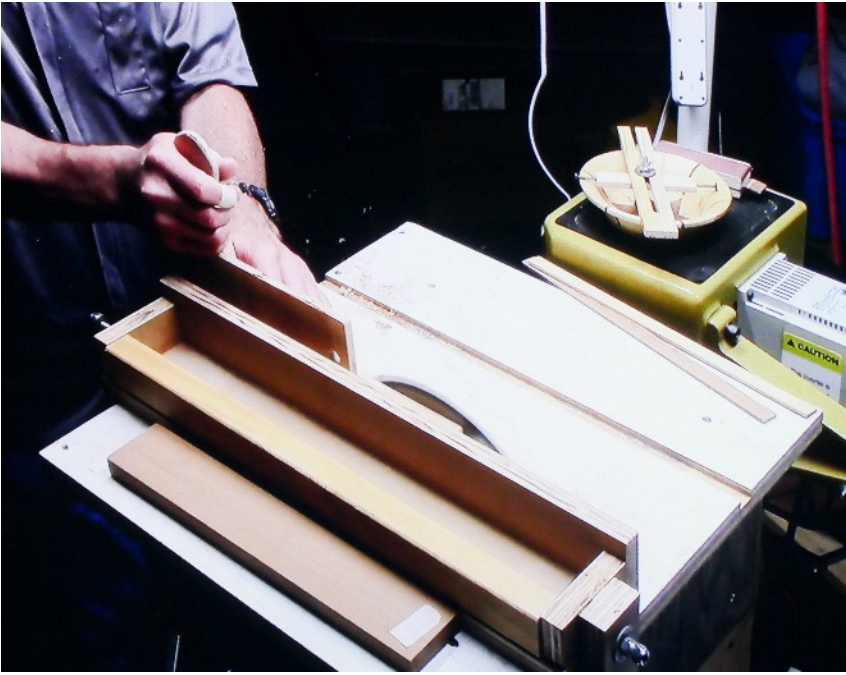
*Table saw? We don’t need no stinkin’ table saw!*



Since the club doesn’t have a table saw, Jim built one just for this demo, using his lathe as the basis. He says the cutting accuracy is somewhat less than it is with a normal table saw. *(But it looks like the rip fence is better than the ones on some table saws!)*







Home-made jigs for segmentation.



Jim uses Super Glue that he buys at the Dollar General Store, 1204 E. Main St., Knox City, TX. The club is considering renting a bus to take interested members to the store to purchase the material, if we have enough interest.





May Show and Tell



**Bob Herman** brought two “weed pots”, which he donated to the raffle.



**Kent Crowell:**  
treadle lathe flywheel.





### May Show and Tell, cont'd.



**Christian Jensen:**

box made from segments of oak scraps. Finish is shellac and wipe-on polyurethane.

Below, pens of Corian. Christian has much of this material, which is “up for grabs,” he says, so see him at the meeting



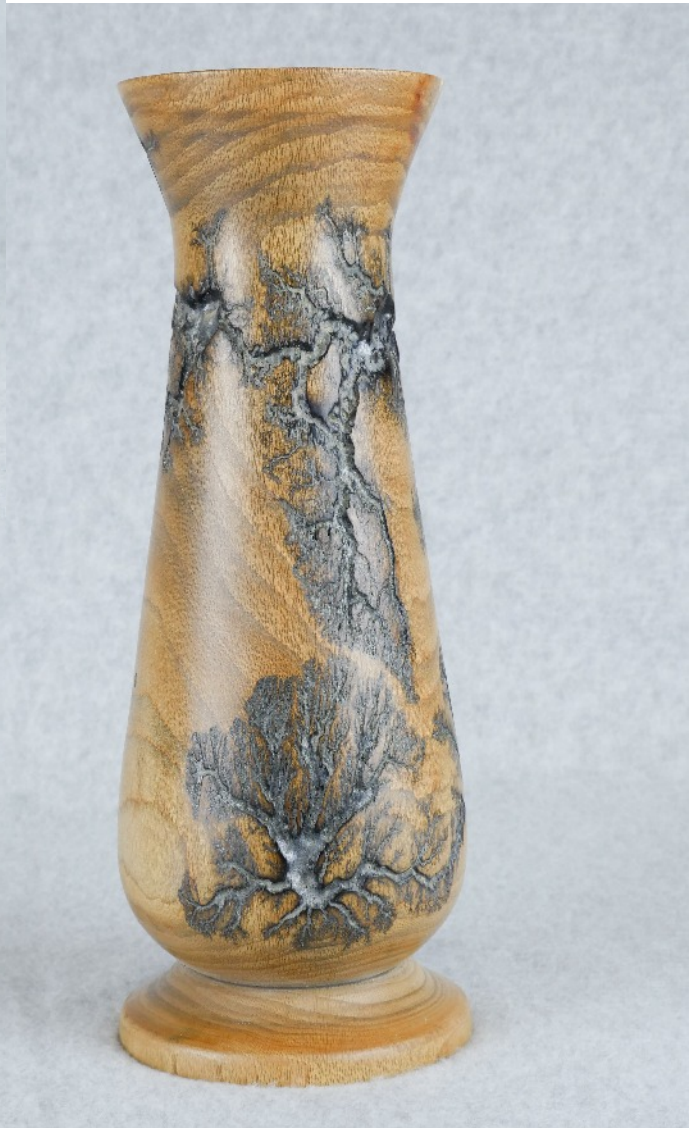


## May Show and Tell, cont'd.



**Coy Hunt:** vessel from 2012, his second attempt at a zig-zag pattern segmentation (left).

**Mark Middleton:** vase of Texas sycamore with Lichtenberg burning and silver micropowder in the crevasses (below).





May Show and Tell, cont'd.



**Mark Middleton:**  
(left) bowl of white oak from Arkansas;  
(below) platter in imitation of Scot Goen.  
“Imitation is the sincerest form of flattery,” Mark reminds us. He also noted, in response to compliments, that even a blind squirrel finds an acorn now and then.





May Show and Tell, cont'd.



**Mike Oglesby:**  
platters of red cedar,  
turned slightly wet  
(the wood, not Mike).  
Mike offers to help  
anyone who would  
like to come to his  
shop and learn to  
turn these platters.





May Show and Tell, cont'd.



**Randy Thorne:** plate holder, long-stem goblet, pepper mill, and pens.



**Half Pencil Marks Exact Copies**

While trying to trace an exact copy of the throat plate for my table saw, I came up with this nifty technique using an ordinary pencil. I just shaved my pencil into a half-pencil by carefully grinding it on my belt sander. The flat edge enables my modified pencil to ride straight up along the edge of the template. It also works great for marking and then shaping inlays for my wood projects. — Tim Reese

*—from Family Handyman*



**Our Web Site (<https://southplainswoodturners.com/>)**

Have a question about what responsibilities of the Officers and Board Members-at-Large have? Find the By Laws under the Leadership Tab. Note: We did not post the private telephone numbers or email addresses of any members on our web site. We use contact boxes where guests can reach us through a safer method.

Or maybe you missed a recent “show and tell” or Buddy Compton’s black bowl with silver cream. Let’s take a closer look at what you will find under our “About” tab. One of the goals of the AAW web page is to find what you need with a single click. Here on our site you will find the next meeting location, a calendar, a “Contact Jim Bob” box, maps to the meeting and classes, and a call for demonstrators starting in our new year in the month of June. At the top where guests and members can’t miss it are graphic links to SWAT and AAW as well as the Google Docs Form where we need you to enter your info so we can prepare a better membership roster for rollout soon.

Past first-place winners of the chapter website contest and newsletter contest have been inducted into AAW’s [Hall of Fame](#), prominently honored at Woodturner.org

The web page is never done and we will strive to keep it up to date. Don’t see your pic? Send something to Kent, Ed, or Christian for the next update or issue.

We hope you will take some time to take advantage of this powerful tool and continue to support us in our mission to educate, inform, and organize woodturning in the South Plains.

---

**Are you new to the South Plains Woodturners?** If so, have you actually read this far? Then why not become a member? Clip or copy this form and bring it to the next meeting!

Sign me up for membership in the South Plains Woodturners!!



Name: \_\_\_\_\_

Email address: \_\_\_\_\_

Street address: \_\_\_\_\_ City/State/ZIP: \_\_\_\_\_

Home phone (if any): \_\_\_\_\_ Mobile: \_\_\_\_\_

**Our Founding Corporate Members**



**Acacia Hardwoods**  
Steven Hernandez

4614 FM 1585 (SOUTH STREET)  
Lubbock, TX 79424


806.794.5099 local  
806.794.3955 fax  
800.288.0629 toll free



**TEXAS TOOL & EQUIPMENT**  
3102 Avenue A • Lubbock, Texas 79404

Phone: 806.763.1641  
Fax: 806.763.1685

**Our Corporate Members**



**DISCOUNT RV & SHOPS**  
RV & BOAT STORAGE • SHOP RENTALS

13209 CR 1800  
(806) 698-1598

**Joey & George**



**TARGET**  
Sheetmetal & Mfg. Inc.  
If it's made out of metal, we can build it!

315 SE Loop 289, Lubbock, TX 79404  
(806) 746-8571  
www.targetsheetmetalmfg.com  
info@targetsheetmetalmfg.com  
Michael Oglesby, Owner



**A Laser's Touch**  
PRECISION LASER ENGRAVING

**UNIQUE AWARDS FOR ANY EVENT!**  
AWARDS \* PLAQUES \* CRYSTAL \* GLASS \* NAMETAGS  
PENS \* CLOCKS \* DESK ACCESSORIES  
INDUSTRIAL PARTS MARKING

**Jeff McKinnon**  
Owner

5135 C 69TH LUBBOCK, TX 79424 (806) 783-0999  
FAX (806) 783-0748



**THE TOOL**

5004 50th St.  
Lubbock, TX 79414  
(806) 792-3721



**CRAFT SUPPLIES USA**  
THE WOODTURNERS CATALOG  
woodturnerscatalog.com • 1-800-551-8876