



Revolutions[©]

The Newsletter of the South Plains Woodturners

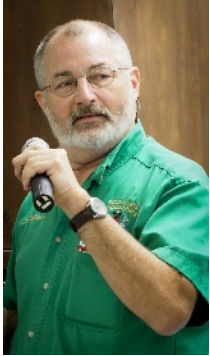


Vol. 11, No. 2



February, 2017

President's Letter



One of the perks of being President is being aware of all the efforts that go on behind the scenes to make our club successful. In penning this article every month, I attempt to share this information and express my thanks. As we move toward the next chapter in SPW's life, the volume of work by numerous individuals has been overwhelming this past month.

Prior to looking forward, we should look back. **Mike and Vicki Oglesby** deserve our heartfelt thanks for hosting us for the past 10 years. I can't begin to understand the preparations and dedication they exhibited in providing a great meeting place for our organization. For those of you who may not know, **Vicki** was the impetus for the beginning of our building fund. At the conclusion of her initial demo, we raffled off her practice pieces. \$450 was earmarked as the first contribution to our building fund! To both goes a **HUGE THANKS!!!**

The idea for the building fund was established 6 years ago. The Board of Directors knew we needed to begin preparing for a permanent facility. To date, through the efforts of many individuals, our building fund has grown to \$18,377! The reality the BOD has faced is that we will be located in temporary facilities for a while. We will be meeting at the Precinct 2 Meeting Hall located at 750 W Garza in Slaton for March, April, and May. Following that location will be a 3 month stay at ULabs MakerSpace, located on 50th street in Lubbock. A statement during a recent board meeting was, "Being in temporary locations gives Jim Bob the opportunity to grow the building fund". It was a tongue in cheek comment, but it addresses the truth in our long term facility solution. Join with me in kicking in a little each month!

Our facility search team, consisting of **Gordon Graves, Pete Piatek, Joe Williamson**, and their assistant **Glenn Williamson** have already logged many hours and miles. Any ideas you have regarding our future locations should be addressed to them. **Harry Hamilton** has also been exploring avenues whereby we share facilities with other non-profits.

Preparing to meet elsewhere has been quite a challenge. **Matthew Evans and David Hoehns** have been working on the audio-video preparations. I expect that work will be ongoing as we work out the bugs. If everyone realizes that the new adventure we are embarking on will not be perfect and will be patient, we will get through this together!

Usual activities of SPW still go on! Another beginner's class will conclude March 2! A special thanks to **Buddy Chesser, Lee Roberts, Bryce Ellis, Gordon Graves, Kent Crowell, and Jim Harris** who have helped this group exceed! An intermediate class will begin the last Thursday of March. What a whirlwind of activity this last month has been!

-Jim Bob Burgoon

Don't go to Target Sheet Metal on Saturday! See the map to the new location on page 3.

Next Meeting: March 4, 2017, 10AM-12Noon (see map, p. 3)

Our presentation will be *Bracelets*, and our presenter will be SPW member Larry Morgan.

The demo coordinator is Bob "Buddy" Chesser—talk to him at the meeting if you would like to be a presenter and you have an idea for a topic.

South Plains Woodturners Officers

President	Jim Bob Burgoon jbburgoon@gmail.com
Past President	Harry Hamilton hhamilton@nts-online.net
1st Vice President	Buddy Chesser lubbockcc@gmx.us
2nd Vice President	Mike Oglesby 806-798-4790
Treasurer	Gordon Graves fourgfarms@hotmail.com
Secretary	Christian Jensen cwjensen@gmail.com
Member at Large 1st Year	Joe Williamson joewilliamson@sbcglobal.net
Member at Large 2nd Year	Bradley Baker bradleybaker22@yahoo.com
Member at Large 2nd Year	Pete Piatak 806-863-3332
Raffle Manager	Glenn Williamson glnwlmson@aol.com

southplainswoodturners.com

Revolutions © is the newsletter for the South Plains Woodturners, Inc., a non-profit organization dedicated to promoting the craft and art of woodturning.

Revolutions © is published monthly at Lubbock, TX.
Mailing Address:

P. O. Box 65428, Lubbock, TX 79464

The South Plains Woodturners is affiliated with the [American Association of Woodturners](#), the [Southwest Association of Turners](#), and the [Lubbock Arts Alliance](#).

Please direct any questions or comments to the editor:
Edward "Special Ed" Spence 806-252-8816
edwardthepurple@gmail.com

Club Calendar

March Club Meeting 3/4/17
Demo: Larry Morgan, Bracelets

April Club Meeting 4/1/17
Demo: Jim Bob Burgoon, Lucky Bamboo

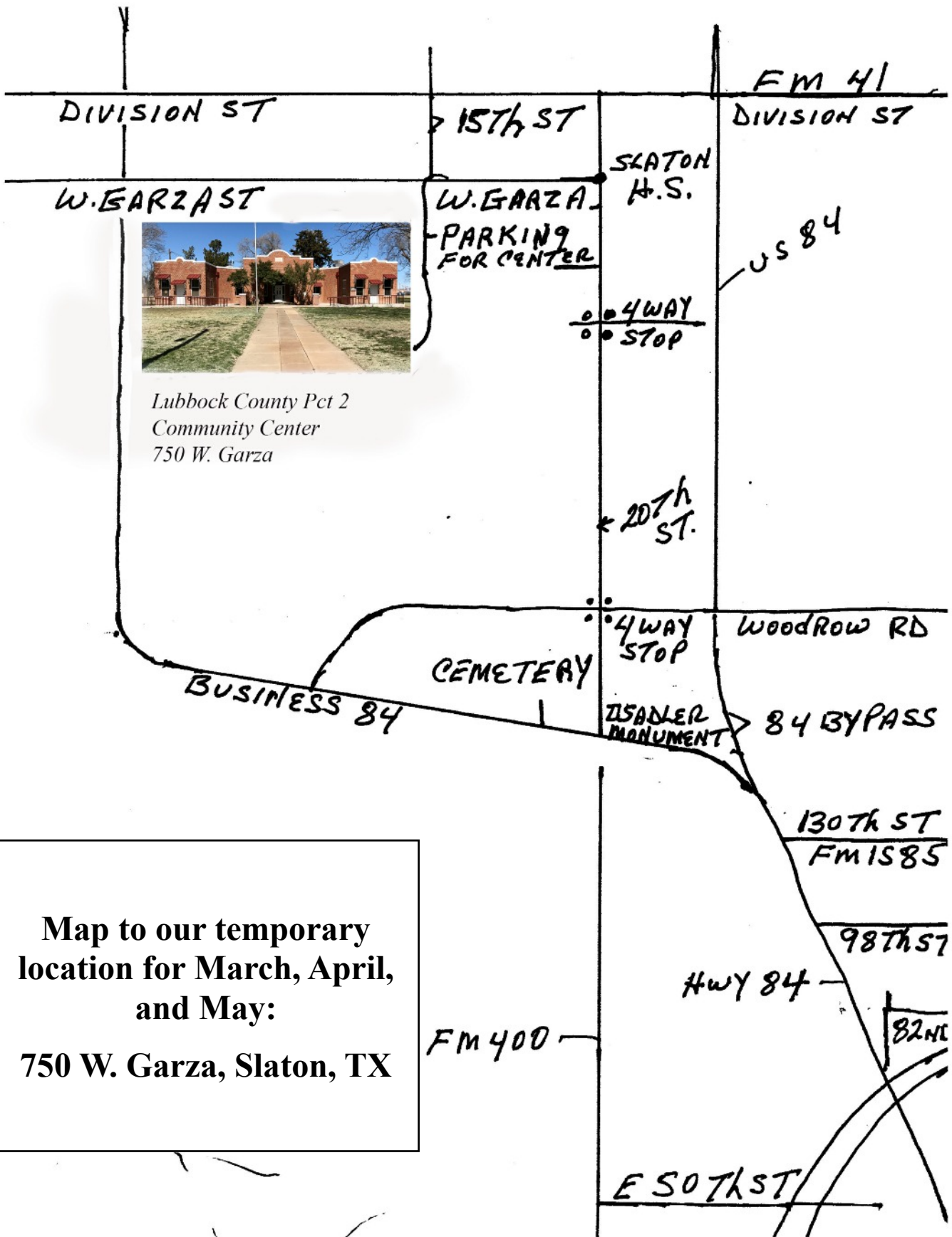
May Club Meeting 5/6/17
Demo: Christian Jensen, Yo-Yo's

Intermediate Class, Garden & Arts Ctr
3/30, 4/6, 4/13, 5/4 6-9PM

Apr 22-23 Lubbock Arts Festival, Civic Center—**start working NOW on your items for sale in the SPW booth!**



These three photos show some of the items donated to the club raffle at the February meeting. Lots of beautiful work and great raw wood (and jars)!



Map to our temporary location for March, April, and May:
750 W. Garza, Slaton, TX

Portrait of a Woodturner: Randy Thorne

"The first time I ever turned a piece of wood on a lathe was in junior high school. I had made an end-step table. The teacher thought it would look real good if the legs were turned instead of square. So, I turned the first leg and put it on the table to see what it would look like. When class ended that day, I had just one leg on the table. The next day, before class started, a boy in the class was messing around with a chisel and accidentally dropped it on my table, knocking about three big gashes in the surface. Of course I lost my temper, and, after I put a few pop-knotches on his head, we were taken to the office. So the principal thought it would be a good idea to take us both out of woodshop class. So he put us in study hall. I never made it back to wood class to finish my table, but I think the teacher might have finished it for himself. I tell everybody that there's a one-legged step table in this world, looking for three legs. About ten years ago Mike Oglesby got me into turning wood, and I joined the South Plains Woodturners. So I've been turning ever since, and I enjoy it very much."
—Randy Thorne, Feb. 21, 2017



Randy in his shop showing his boring bar on the Powermatic lathe (his third lathe).

We're proud to have Randy in our club!

(Yes, he will remove the faceplate before hollowing!)



Randy's second lathe, a Jet mini that he got from Mike Oglesby. Mike and Randy played guitar together in a country band. (The first lathe shall remain nameless.)



Randy holds one of his teeny-tiny spalted platters. We hope to see the finished product at an upcoming Show and Tell. He's a native West Texan and hails from the Rotan area originally.



Randy earned two Purple Hearts in Vietnam, which are displayed in his den, along with some fishing and hunting trophies. Nearby are cases of his beautiful turnings.



February Demo: Tom Farrell on "Lathe-Powered Sanding"

Tom demonstrated the technique whereby he achieves such a mirror finish on his work: he uses a lathe-powered sander such as the "Sanding Solution" from the Sanding Glove in Bloxom, VA, or the Sorby or Apprentice Angle Sander, available from Craft Supplies.



Tom's angle sander can be seen lying on the bedways at the top left. He went through numerous situations in which the lathe-powered sander can simplify and improve the turner's quest for the ultimate product. Anyone who has seen Tom's results believes what he says!

Beginners Class I *Photos courtesy of Kent Crowell*



Beginners Class II *Photos courtesy of Kent Crowell*



Freedom pens made at the workshop!

Centering Small Pieces

by Phil Colson, Atlanta, GA

Here is a simple and easy way to center a small piece of wood that is gripped in the jaws of your chuck when it is too small to create a tenon.

First, I cut a small piece of wood, which will become a pull, finial or knob.

I put the small piece of wood in my Number 2 jaw and only tighten the jaw to the point where it will hold the piece, but not so tight that it can't be moved in the jaws.

I don't worry about centering the piece and they are usually not centered over the length of the piece.

I turn on the lathe and use the top of the scraper to apply slight pressure under the spinning wood. By gently raising the scraper, all four (or more) sides will hit the top of the scraper and the piece will be centered.

Once it is centered, I stop the lathe and finish tightening the chuck. I'm ready to turn!

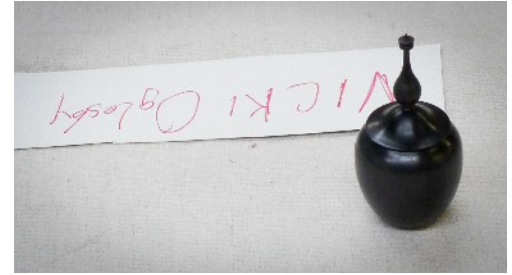
from the Highland Woodturner, Feb., 2017

Video demo at https://www.youtube.com/watch?time_continue=24&v=mrqulfh3f9I

Show and Tell, February 4, 2017



Gordon Graves turned this beautiful vessel in Dec., 2015, from mesquite. He proudly calls it "Vase."



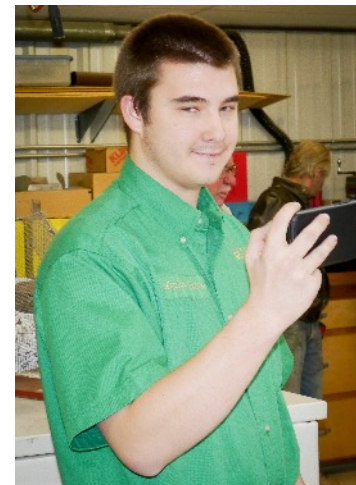
Gorgeous Vicki Oglesby couldn't make the meeting, but she sent this gorgeous blackwood lidded vessel with Mike for the raffle!



Speaking of Mike, he brought this gorgeous eucalyptus platter.



Ron Butler showed us this fine segmented vessel. He's hosting another segmented turning workshop soon.



Matt Evans makes video recordings at our meetings. He doesn't usually look like he's up to no good, but sometimes....



Tune in to the May meeting to see Christian Jensen's demo on making yo-yo's, as seen here, along with his handsome lidded box of multiple woods.



Lee Roberts brought two fine platters, one of zebrawood, the other of maple. He finished both in January of this year.



Robert Marsh shows two nicely-finished small bowls.

Revolutions

Show and Tell, cont'd.

February, 2017



Jim Burt had painted the particleboard soccer ball he showed last month. He also



brought a platter of mesquite and oak, which he named "How 'bout them Cowboys." The coaster is made of cedar, pine, and walnut. The platter and coaster are finished with lacquer. Beautiful work!



Randy Thorne discusses his lidded vessel of box elder, finished with semi-gloss Deft. He completed it in January. He brought several other items for inclusion in the raffle, but they were gone before we could photograph them. Randy never disappoints.



Jim Bob Burgoon, our president, sometimes known as our Illustrious Potentate, shows a pen and a magnifying glass. Some lucky person got one of his fine pens in the raffle!



Our Founding Corporate Members



Acacia Hardwoods
Steven Hernandez

4614 FM 1585 (SOUTH STREET)
Lubbock, TX 79424

806.794.5099 local
806.794.3955 fax
800.288.0629 toll free



TEXAS TOOL & EQUIPMENT
3102 Avenue A • Lubbock, Texas 79404

GREG WILLIAMS
gew@texas-tool.com

Phone: 806.763.1641
Fax: 806.763.1685

Our Corporate Members

Why pay a lot for storage?

AFFORDABLE
R.V. STORAGE & SHOP'S

130th & Frankford Ave.
(806) 698-1598

Trent & Josh



TARGET
Sheetmetal & Mfg. Inc.
If it's made out of metal, we can build it!

315 SE Loop 289, Lubbock, TX 79404
(806) 746-8571
www.targetsheetmetalmfg.com
info@targetsheetmetalmfg.com
Michael Oglesby, Owner

A Laser's Touch
PRECISION LASER ENGRAVING

UNIQUE AWARDS FOR ANY EVENT!
AWARDS * PLAQUES * CRYSTAL * GLASS * NAMETAGS
PENS * CLOCKS * DESK ACCESSORIES
INDUSTRIAL PARTS MARKING

Jeff McKinnon
Owner

5135 C 69TH LUBBOCK, TX 79424 (806) 783-0999
FAX (806) 783-0748



5004 50th St.
Lubbock, TX 79414
(806) 792-3721



CRAFT SUPPLIES USA
THE WOODTURNERS CATALOG
woodturnerscatalog.com • 1-800-551-8876