



Revolutions

The Newsletter of the South Plains Woodturners



Vol. 10, No. 8

AAW | AMERICAN ASSOCIATION
OF WOODTURNERS

August, 2016

The President's Letter



What a great time was had at the 25th SWAT by all who attended! SPW had 19 of the more than 1100 attendees. The vendors offered a veritable smorgasbord of anything you could need or want. I was like a kid in a candy store! As you know, **Buddy Compton** was the SWAT president for this year. He did a masterful job organizing the event. Having been to both SWAT and the AAW Symposium, I believe we are fortunate to have an event like SWAT so close every year. **David Hoehns**, who serves as our SWAT Director, did a superlative job creating the handbook. It never ceases to amaze me how many tidbits I pick up there to improve my turning. If you have never attended, consider going at least once. Nine demonstrations over the course of three days, 3 lunches, and vendor access—quite a value for \$140 registration fee!

September is going to be an event-filled month as well. **Christian Jensen** kicks off the month with his first demonstration! Saturday the 10th is our opportunity to participate in the **Garden and Arts Fall Festival**. Remember to turn something to donate for our sale booth. The following **Tuesday (13th)**, we begin an intermediate class at the Garden and Arts Center. We will need several hands for both of these events. The festival runs from 9:00-4:00. Our public events are where we make the most contacts. To grow our club, we constantly need to be reaching out to those who might share our interest. We will have our lathes there and offer items for sale to grow our building fund. Look for the sign-up sheet at the meeting.
—Jim Bob

Future Wood Turners of America!



Congratulations to our member Jemina Allen and her husband, Bradley, on the birth of their son, Eben Thomas Allen, on the evening of August 17th! Eben weighed exactly 8 pounds and was exactly 21 inches long. That's precision for you! Maybe we'll see him at a meeting one day.

Next Meeting: September 3, 2016, 10AM-12Noon, at Target Sheet Metal (see map, p. 9)

Our presentation will be *Get a Handle on Your Spin Top*, and our presenter will be SPW member Christian Jensen. Christian also serves as our treasurer, for which he has our thanks! Being a treasurer in a volunteer organization is not easy.

See the schedule on page 2 for upcoming demonstrations. The demo coordinator is Bob "Buddy" Chesser—see him at the meeting if you would like to be a presenter and have an idea for a topic.

The Thompson tools have arrived. If you ordered a set, bring \$120 to the September meeting.

South Plains Woodturners Officers

President	Jim Bob Burgoon jbburgoon@gmail.com
Past President	Harry Hamilton hhamilton@nts-online.net
1st Vice President	Buddy Chesser lubbockcc@gmx.us
2nd Vice President	Mike Oglesby 806-798-4790
Secretary	Gordon Graves fourgfarms@hotmail.com
Treasurer	Christian Jensen cwjensen@gmail.com
Member at Large 1st Year	Joe Williamson joewilliamson@sbcglobal.net
Member at Large 2nd Year	Bradley Baker bradleybaker22@yahoo.com
Member at Large 2nd Year	Ron Butler 806-759-5271
Raffle Manager	Glenn Williamson glnwlmson@aol.com

southplainswoodturners.com

Revolutions © is the newsletter for the South Plains Woodturners, Inc., a non-profit organization dedicated to promoting the craft and art of woodturning.

Revolutions © is published monthly at Lubbock, TX.
Mailing Address:

P. O. Box 65428, Lubbock, TX 79464

The South Plains Woodturners is affiliated with the [American Association of Woodturners](#), the [Southwest Association of Turners](#), and the [Lubbock Arts Alliance](#).

Please direct any questions or comments to the editor:

Edward Spence 806-252-8816
edwardthepurple@gmail.com

Club Calendar

SWAT 25th Anniversary 8/26/16
Symposium, Waco, TX thru 8/28/16

September Club Meeting 9/3/16
Demo: Christian Jensen, *Get a Handle on Your Spin Top*

BOD Meeting 9/5/16

Setup for Fall Arts & Crafts Fair 9/9/16
Lubbock Garden & Arts Center

Fall Arts & Crafts Fair 9/10/16
Lubbock Garden & Arts Center

October Club Meeting 10/1/16
Demo: Larry Rogers, *Wood Mason Jar Lids*

BOD Meeting 10/3/16

November Club Meeting 11/5/16
Demo: Mike Oglesby, *Wet Wood Bowls*

BOD Meeting 11/7/16

December Club Meeting 12/3/16

BOD Meeting 12/5/16

Annual Club Banquet 12/9/2016
Lubbock Women's Club, 2020 Broadway

Needed for the banquet: ~50 small items for door prizes, and quality items for the BOGO raffle

Tools for Sale

Loy Cornett is offering the following items for sale, new in the original box:

Super drive center, #2MT, 1" crown \$19.95, #LCENTSS22

Drill chuck, MT#2 1/2", \$29.95, #TM32 (The pen mandrel listed last time was sold.)

Loy Cornett, 806-872-0202. If no one answers, leave a message.

August Demonstration: Randy Thorne on Turning Captive Rings



Randy's demonstrations are always informative and entertaining. On August 6th he showed us how to turn a goblet with captive rings, starting from the blank and going through to the finished product. He has tools that he has made (or modified) just for the purpose. The modifications are easily done and make the process much faster, easier, and more satisfying. Particularly interesting was his technique of sanding the inside of the ring by affixing sandpaper to the goblet stem and holding the ring against it as the lathe turns the goblet. Randy is a master of many facets of woodturning, and captive rings are among them.

Get rid of sanding scratches



To avoid those stubborn crossgrain scratches that just seem to show up when you apply the finish, try this. With each grit up to 180, turn off the lathe and sand WITH the grain by hand until the scratches are gone. Clean the dust off of the piece with a lint-free cloth, use good lighting, and look for the rings. If you can still see the scratches at that point, you will really see them when the finish is applied, so never hesitate to drop back a grit size to clean them up. It only takes a few moments to take them out, and your end product will have a much better finish.

- S. Gary Roberts, Austin, TX

Children's Home of Lubbock Seeks Donations

As part of its Fall Festival on Saturday, September 24th, 10 AM to 3 PM, the Children's Home of Lubbock will hold a silent auction. They would appreciate donations of artwork, and we at the South Plains Wood Turners are in a position to answer that call.

Please drop off your donations at the home's Moritz Building, 4404 Idalou Highway, Lubbock, TX 79408, by September 19th (Monday).

Questions? Call Cindy Stephens, 806-762-0481, or email cstephens@childshome.org. Visit the Festival web site <http://www.childshome.org/fallfestival.aspx>.

Show and Tell, SPWT Meeting, August 6, 2016



Harry Hamilton brought a serving set (tray, pitcher, and glasses) made from oak, hackberry, sweet gum, and walnut. One of the members noted that towels would be needed if a user were to pour tea (please, not beer!) into the glasses or take a swig.



Coy Hunt shows his "Wedding Goblet" with captured rings, which he completed in April, 2016.



David Turner brought rough-edge mesquite turnings, a bowl (from 2013) and a vase (from July of this year). The bowl has natural patterns that resemble a road runner, and David named the piece "Road Runner."



Revolutions

August, 2016

August Show and Tell, cont'd.



Joe Williamson brought a mesquite vase, mesquite bowl, and cedar bowl, all completed this year.

Richard Sealy showed two elm turnings, a bowl and a hose guard, both completed in July of this year..



Dick Markham showed a globe and a sculpture of assorted items. "Uh oh" stands for "Uniquely handsome, opulent handiwork." (It couldn't mean anything else.) Dick didn't say whether all the items conformed to the Golden Proportions, or just some of them.



Randy Thorne brought a segmented bowl of Honduras rosewood and maple on a walnut base, and a goblet of spalted box elder. Both were turned in June and finished with semi-gloss Deft.

August Show and Tell, cont'd.



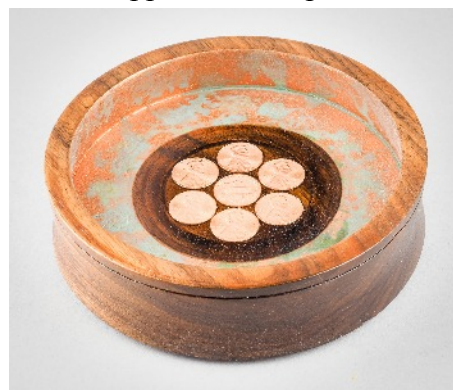
Ken Romines discusses his lidded box of maple, which he made in 2013.



Bradley Baker shows Jim Bob his bowl called "Seven Cents." Brad used walnut, copper metallic paint, and pennies.



Ron Butler holds "Greek Key," a vase of maple and wenge, completed in July.



◆ **Raffle** ◆
Turn Something
Donate it to the
◆ **Raffle** ◆



Buddy Chesser brought a cup holder he made from common cedar. He completed it on August 1st.

August Show and Tell, cont'd.



Jim Bob Burgoon shows a bowl of maple, walnut, and purpleheart. This item will be donated to the SWAT 2-for-1 raffle.



(Jim Bob also brought bottle stoppers and a pen, which are not pictured because of an egregious oversight on the part of the club photographer.)



Jim Burt holds a mesquite crotch bowl which he turned in July. In addition, he brought a heart platter of pine and cedar and a heart medallion of pine and oak, both also completed in July.



Larry Rogers showed us two segmented bowls completed in July, one of ash and bubinga, the other of sycamore and black bean.



August Show and Tell, cont'd.



“Hark, is this a honey dipper I see before me?” Brad Sumner strikes a Shakespearean pose as he describes his experience with the SPW beginners class, during which all 3 items were made (the other two being a scratch awl and an ornament).



Ed Spence donated a “Celtic” pen with acrylic barrel, and a “Purse Pen,” also of acrylic, to the club raffle. He also showed his first attempt at a segmented bowl (walnut, maple, and mahogany) and two pens made as gifts for friends.



Mike Oglesby couldn't have been dizzy when he made these dizzy bowls. Right, Vicki?



Toolrests for Parting Tools

Years ago, I made a stubby-post toolrest out of a bit of 1" (25mm) wide rectangular-stock steel. This small-diameter toolrest was useful for supporting a parting tool right next to the faceplate. Unlike standard-size toolrests, this post can be positioned to allow tool support at 90° to the cut.

I have since replaced the rectangular tool post with a 1½" (38mm) diameter round rod. I use this tool post on my primary lathe, and I have ground the back half of the top back at 45°. I use this toolrest frequently.



This small toolrest is also invaluable for close support of a small gouge when undercutting the bottom of a bowl. The gouge can be moved up and over to achieve a high shearing cut for blending the bottom diameter of the bowl into its side curve.

I have made the same tool post out of 1"(25mm) rod for my Powermatic lathe. Cut a length of 1" (25mm) cold-rolled steel stock at 45°, about 8" (20cm) from one end to create two posts. Make a second cut square across halfway up that 45° slope. Round all edges and smooth with a sander.

If you have a welder you can cut a 1½" to 2" (38mm to 51mm) section of 5/8" to 1" (16 mm to 25 mm) diameter rod and weld it to the top of a 1" (25 mm) shaft to give a bit more support for the gouge. Any wider would defeat the purpose of the narrow toolrest. Sufficiently round all the top edges of the metal to allow the post to slip in close to a bowl without the danger of marring the wood.

If you give this simple toolrest a try, I think you will find yourself reaching for it regularly.

~ Fred Williamson, Crozet, VA



Do You Have Items for Sale?
Call the Editor before
the 15th of the Month

Our Founding Corporate Members



Acacia Hardwoods
Steven Hernandez

4614 FM 1585 (SOUTH STREET)
Lubbock, TX 79424

806.794.5099 local
806.794.3955 fax
800.288.0629 toll free



TEXAS TOOL & EQUIPMENT
3102 Avenue A • Lubbock, Texas 79404

GREG WILLIAMS
gew@texas-tool.com

Phone: 806.763.1641
Fax: 806.763.1685

Our Corporate Members

Why pay a lot for storage?

AFFORDABLE
R.V. STORAGE & SHOP'S

130th & Frankford Ave.
(806) 698-1598

Trent & Josh



TARGET
Sheetmetal & Mfg. Inc.
If it's made out of metal, we can build it!

315 SE Loop 289, Lubbock, TX 79404
(806) 746-8571
www.targetsheetmetalmfg.com
info@targetsheetmetalmfg.com
Michael Oglesby, Owner

A Laser's Touch
PRECISION LASER ENGRAVING

UNIQUE AWARDS FOR ANY EVENT!

AWARDS * PLAQUES * CRYSTAL * GLASS * NAMETAGS
PENS * CLOCKS * DESK ACCESSORIES
INDUSTRIAL PARTS MARKING

Jeff McKinnon
Owner

5135 C 69TH LUBBOCK, TX 79424 (806) 783-0999 FAX (806) 783-0748



**5004 50th St.
Lubbock, TX 79414
(806) 792-3721**



CRAFT SUPPLIES USA
THE WOODTURNERS CATALOG
woodturnerscatalog.com • 1-800-551-8876