

Vol.8 No. 11

# Revolutions

November 2014



## Flute Cutting Demo

Ray Hughes gave us a demonstration of his flute cutting jig at the November meeting.

Hughes' device has been constructed from plywood which gives stability while remaining light weight. Ray drives his cutter with an inexpensive pneumatic die grinder.

Equipping the grinder with a small cove bit, Ray cuts level flutes along the surface of a work piece mounted on a lathe. The jig is not made to flutes that swirl or curl as a barley twist for an example.

The jig is capable of cutting both level and 90° up or down. Like all the commercial flute cutting devices, Ray's makes use of an indexing tool to establish level cuts and measure their positions.

Hughes jig also has a depth limiting device to restrict the final depth of cut. This appeared to be adjustable, and it could, thus, limit each successive pass with the router bit.

One may build a device similar to Hughes' for under \$40. Similar commercially available jigs include the Flute master at \$175 and the Drill Master by Oneway at 119.95.

Ray Hughes demonstrated a simple and inexpensive solution for surface enhancement.

## Club Designated 501 (c) (3)

In October the South Plains Woodturners, Inc. was notified by the Internal Revenue Service of the club's designation as a 501 (c) (3) status. The classification means that donations made to the South Plains Woodturners may be claimed as a tax exemption.

Our previous tax status was a 501 (c) (7) or private club. The new tax situation is based on our educational component.

**ALL REGULAR MEETINGS INCLUDE AN INSTRUCTIONAL DEMONSTRATION.**

**THREE SIX-WEEK "BEGINNER'S CLASSES" CONDUCTED IN 2014.**

**CLUB OPERATES SHARPENING BOOTH AT SWAT.**

**WOODTURNING DEMONSTRATIONS CONDUCTED ANNUALLY AT LUBBOCK ART FESTIVAL AND FALL FEST.**

**MEMBERS HAVE CONDUCTED DEMONSTRATIONS AT VARIOUS SCHOOLS.**

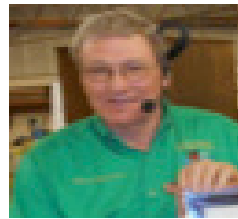
The new tax status makes the club eligible for numerous grants and financial opportunities.

Continued on page 4 (See IRS)

**Revolutions** © is the newsletter for the South Plains Woodturners, Inc., a non-profit organization dedicated to promoting the craft and art of woodturning. **Revolutions** is published each month at Lubbock, TX. The South Plains Woodturners is affiliated with the American Association of Woodturners and The Southwest Association of Turners. Please direct any questions or comments about **Revolutions** to the editor: David Hoehns.  
 806 789-5108      [allskewedup@gmail.com](mailto:allskewedup@gmail.com)

Mailing address for club    **P. O. Box 65428  
 Lubbock, TX 79464**

SOUTH PLAINS WOODTURNERS OFFICERS	
PRESIDENT	<b>HARRY HAMILTON</b> <a href="mailto:hhamilton@nts-online.net">hhamilton@nts-online.net</a>
PAST PRESIDENT	<b>JIM BOB BURGOON</b> <a href="mailto:jbburgoon@gmail.com">jbburgoon@gmail.com</a>
FIRST VICE PRESIDENT	<b>RON BARNETT</b> <a href="mailto:rbarnet3@gmail.com">rbarnet3@gmail.com</a>
SECOND VICE PRESIDENT	<b>MIKE OGLESBY</b> 806 798 4790
SECRETARY	<b>DAVID HOEHNS</b> <a href="mailto:allskewedup@gmail.com">allskewedup@gmail.com</a>
TREASURER	<b>BOB HERMAN</b> <a href="mailto:bherman@nts-online.net">bherman@nts-online.net</a>
MEMBER AT LARGE	<b>PETE PIATAK</b> <a href="mailto:pete@sptc.net">pete@sptc.net</a>
Raffle Manager	<b>Glenn Williamson</b> <a href="mailto:glnwlmson@aol.com">glnwlmson@aol.com</a>
Librarian	<b>Robert Perkins</b> <a href="mailto:robertp796@sptc.net">robertp796@sptc.net</a>
Photographer	<b>Ed Spense</b> <a href="mailto:eddlestimo@prodlgy.net">eddlestimo@prodlgy.net</a>
Workshop Boss	<b>Coy Hunt</b> <a href="mailto:cghunt@windstream.net">cghunt@windstream.net</a>



## PRESIDENT'S LETTER

The Christmas Party is rapidly approaching. Yesterday, I received a phone call from our NASA speaker asking if there a particular topic we wish to hear him address. I ask Mr. Armstrong if he would speak on Space Lab discoveries and how these discoveries will assist us in ultimately reaching Mars. I also ask him to discuss what vehicle was going to replace the space shuttle and what chief obstacles have to be overcome before landing a man on Mars. I think his presentation will be very enlightening, especially for those younger people who will live to see a manned Mars expedition.

Today we received permission to display our turning in the Overton Hotel lobby. As you know this is a high end hotel and being able to display our turning in such a facility is a compliment to the artists of our club. The turner will be able to place his email address on the displayed piece. Our display case chairman, Vicki Oglesby, suggested that we display Xmas theme turnings. Vicki asked that if you have Christmas season turnings please contact her at 806-632-6655.

South Plains Wood Turners is in the process of developing a website. David Hoehns is our webmaster. If you have a suggestion on items which you feel need to be included in our website construction, please contact David. 806-789-5108 or email him at [allskewedup@gmail.com](mailto:allskewedup@gmail.com).

Raffle tickets for the Trend Air Shield helmet will be available at our December meeting. The tickets are \$5.00 each or 5 for \$20.00. The raffle drawing will occur during our April meeting.

As a reminder for new members, you may check out from our library books and DVD's on a wide variety of woodturning topics. Our librarian Robert Perkins will assist you during the regular monthly meetings.

Harry Hamilton

**Always Think Safety**

### Trend Air Shield Raffle



The South Plains Woodturners will be holding a raffle through to the April meeting.

**The winner will breath better.**

The winner will take home a Trend Air Shield Pro.

**Tickets are \$ 5  
or 5 for \$ 20**

You do not have to be present to win  
Thanks to James LaMuraglia and  
[Trend Routing Technology](#)  
for the donation.

### Improving Our Images

As most of you know, Ed Spence has been taking photographs at our meetings of the Show 'N Tell table. Although the quality of the photographs have improved greatly with Ed's skills and composition, the background on the photographs tends to distract from the images. Pete Piatak discussed this during the November BOD discussion of the club's website, asking whether the images could be improved.

As a result, Ed will set up a studio at the back of our meeting room to shoot photographs with lighting and a solid background. Ed may need some help to ferry our pieces between the Show 'N Tell table and the back. Check out Ed's images on the [SWAT website](#).

### Club Calendar

December Club Meeting 10-12 a.m. Mike Oglesby <i>Turning Big: Platter</i>	12/6/14
BOD Meeting	12/8/14
Christmas Party 6:30 p.m. Lubbock Women's Club	12/11/14
January Club Meeting 10-12 a.m. Jim Burt <i>Heart Box</i>	1/3/15
BOD Meeting	1/5/15
Beginner's Class	1/29/15
Beginner's Class	2/5/15
February Club Meeting Tom Farrell <i>Deep hollowing/finishing on the lathe</i>	2/7/15
BOD Meeting	2/9/15
Beginner's Class	2/12/15
Beginner's Class	2/19/15
Beginner's Class	2/26/15
Beginner's Class	3/5/15
March Club Meeting Ray Hughes	3/7/15
BOD Meeting	3/9/15

**The Wood Blanks**

**Used in Mike's Demo**

**Supplied by**

**James Kesler**

[james.kesler@att.net](mailto:james.kesler@att.net)



The development of our website continues.  
Check it out at [southplainswoodturners.com](http://southplainswoodturners.com)



### Studio Tour 2014



John Franklin and Tom Farrell showed their work in the Eighteenth Annual Artist's Studio Tour this month. John set up at Ginger Bundock's studio while Tom Farrell displayed at Melinda Green Harvey's.

### Burgoon demo's at ATC

Jim Bob Burgoon demonstrated at the Byron Martin Advanced Technology Center November 12th. Randall Hust, the new woodshop instructor at the ATC, invited Jim Bob to demonstrate lathe work in general and pen turning specifically for the high school classes.



and pen turning specifically for the high school classes.



The demonstration kicks off the Freedom Pen turning by the students again this year. Funded by the South Plains Woodturners, the students create pens that will be donated to the Freedom Pen Project.

### IRS

The new status offers an opportunity to expand our thinking. We had been in some discussion the Louise Hopkins Underwood Center for the Arts, but this has been fruitless. Now, we may continue to pursue a site for meetings and classes.

Target Sheetmetal has been a wonderful host for the club throughout our history. Space is becoming a concern. During the November meeting, we counted attendance at fifty-eight. This exceeds seating. While some have always chose to stand during our meetings, we cannot continue with SRO meetings.

Our building fund needs to grow. The 501 (c) (3) status should help it to grow.

### Oglesbys Strike Big in National Arts Program



Several club members entered the 25th annual exhibit of the National Arts program in Lubbock, Texas, being eligible as volunteers in the Garden and Arts Center. Vicki Oglesby's *Ort Art*, an assemblage of steel and aluminum gears took 3rd Place in the Professional Division.

The award for Best in Show went to Mike Oglesby for his end-grain mesquite platter.

The awards were made Friday, November 7, At the Lubbock Garden and Arts Center.

### Show 'N Tell



Larry Rogers exhibited the segmented vase shown above (and in detail above right.) The vase contains over nine-hundred pieces. Larry also showed the segmented bowl shown below.



Continued on page 5 (See Show)



# Show



At left David Turner shows a series of natural-edged mesquite bowls and a vase.



Bradley Baker shows two scratch-awls made during the the club's latest Beginner's Class by Bradley and Laura, his wife. The awls, bowls and spindle pieces were all made during the class by Laura and Bradley.



At left, Richard Sealy shows lidded goblet turned from apricot and a sycamore bowl.



Jim Harris shows maple bowl started at September work shop



At left, Joe Williamson shows flame boxelder bowl. Bowl also is shown-above.



Randy Thorne holds his burl assembly. Below are numerous bowl and vase forms by Thorne.



Mike Oglesby describes his silver maple bowl and two smaller forms.



Continued on page 6 (See Show)

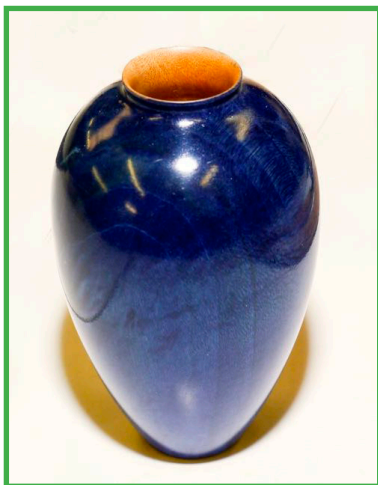


### Show



Ron Butler holds his Indian Blanket design segmented form.

Ron invited a few members to come to his shop in Lamesa to work on segmenting issues.



Ron Barnett has been focusing on the vase form. In the picture above left, Ron holds the maple form with dark wood collar. In above right is a narrow long stem vase. This image also show two tool handles Ron turned. The dyed-blue vase is show enlarged in the bottom image.

### For Sale

Laguna Tools Platinum Series 18 - 47. **\$1400.00**



Click on link below

[Specifications](#)

Purchased last year for \$1999.00  
Good Condition

Jet 10 -14  
Excellent Pen Lathe

**\$350.00**

Good Condition



Contact Richard Sealy  
to learn more about either Lathe  
Email: [stretch@pics.net](mailto:stretch@pics.net)  
(806) 201-3045

**Do You Have Items for Sale?**

**Call the Editor before  
the 15th of the Month**

**Christmas Party:**

December 11 at 6:30 pm  
Lubbock Women's Club

**See Club Treasurer for tickets!!**

**Tickets \$25**



### Founding Corporate Members



**Acacia Hardwoods**  
Steven Hernandez

4614 FM 1585 (1585th STREET)  
Lubbock, TX 79424

806.794.5099 local  
806.794.3955 fax  
800.288.0629 toll free



**TEXAS TOOLS & EQUIPMENT**  
3102 Avenue A Lubbock, Texas 79404

**GREG WILLIAMS**  
greg@texas-tool.com

Phone: 806.763.1641  
Fax: 806.763.1685

### Corporate Members



**RETOOL**  
5004 50th Street  
Lubbock, TX 79414  
(806) 792 - 3721



**TARGET**  
SHEETMETAL & MANUFACTURING, INC.  
Mike Oglesby

Home: 806 795-9100  
Fax: 806 745-8582  
E-mail: targetsheetmetal@att.net  
WWW.TARGETSHEETMETAL.COM

Office: 806 745-8581  
315 South Loop 209  
Lubbock, TX 79404

Why pay a lot for storage?



**AFFORDABLE**  
R.V. STORAGE & SHOP'S  
130th & Frankford Ave.  
(806) 698-1598  
Trent & Josh



**ALaser's Touch**  
PRECISION LASER ENGRAVING

**UNIQUE AWARDS FOR ANY EVENT!**  
AWARDS \* PLAQUES \* CRYSTAL \* GLASS \* NAMETAGS  
PENS \* CLOCKS \* DESK ACCESSORIES  
INDUSTRIAL PARTS MARKING

**Jeff McKinnon**  
Owner

5135 C 69TH  
LUBBOCK, TX 79424

(806) 783-0999  
Fax (806) 783-0748

WWW.ALASERSTOUCH.COM  
JEFF@ALASERSTOUCH.COM

### Club Benefactor



**CRAFT SUPPLIES USA**  
THE WOODTURNERS CATALOG  
woodturnerscatalog.com • 1-800-551-8876

