

# Revolutions

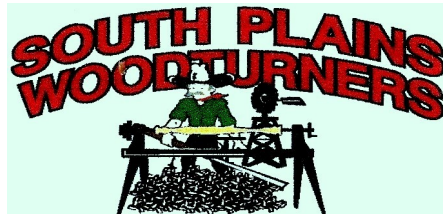
Vol. 5

No. 5

May 2010



NEWSLETTER FOR THE



Lubbock, Texas



Keith Hughes shows a bowl gouge grind

## Keith Hughes Provides Sharpening Tips At May Demo

All the signs were in perfect conjuncture and alignment for the May Demo. Keith Hughes was able to sneak away from Midland without the Federal Aviation Agency finding some way to ground him at (MAF) 9506 La Force Blvd, 79711. Keith brought us a really great sharpening demonstration.

He emphasized safety in the demo. Keith referred several times to the Alan Lacer with Jeryl Wright article from *The American Woodturner*, "Refining the Edge Skews and Gouges: Improved Turned Surfaces with Simple Sharpening Techniques, Summer 2009.

Hughes discussed methods for sharpening, freehand grinding, adjustable tool rests, sharpening jigs. Freehand grinding is the quickest way to sharpen a tool, Hughes said. Quickest if one discounts the time spent learning to free sharpen.

Keith listed several sharpening jigs in his handouts, Wolverine by Oneway®, Woodcut Tru-Grind® and the Sorby Pro-Edge®. He discussed the essential elements of the sharpening jigs. They reproduce predictable grinds time after time. As muscle memory develops, a turner will quickly feel when a grind is not redundant.

Hughes demonstrated how jigs work, and he talked about some of the so-called signature or named grinds.

He also talked about heat and the need to avoid it during sharpening.

Hughes also dwelt at some length on the need hone lathe tools when they are fresh from the grinder, citing the Lacer article. If one is not a believer in honing lathe tools, take a close look at Picture 10 in the Alan Lacer article from the *American Woodturner*. It will make a believer out of you.

Editors Note: AAW Members can access the article at <http://www.woodturner.org/> Log in and all the past journals are available in a digital format. There is also a link to join the AAW.

## In this Issue

Presidents Letter	2
Christmas Party	2
Next Meeting Details	3
May Gallery	3
Member News	3
Mentoring Program	4
Corporate Members	6

## Dues are Due

It is that time of year. Annual dues are now due and payable. The dues this year are \$30.00. Charles Swift has handed over the books to Tom Farrell, our new Treasurer. So, lets bury Tom under the money, folks. David Turner, the new Secretary has promised to beat on the delinquents, so get those dues in. Tom's address for those who can not get to the June meeting is P.O. Box 231, Meadow TX 79345.

**Revolutions** © is the newsletter for the South Plains Woodturners, an organization dedicated to promoting the craft and art of woodturning. **Revolutions** is published each month at Lubbock, TX.

The South Plains Woodturners is affiliated with The American Association of Woodturners and The Southwest Association of Turners.

Please direct any questions or comments about **Revolutions** to the editor:

David Hoehns

806 798-2346

[sp.woodturners@att.net](mailto:sp.woodturners@att.net)

### South Plains Woodturners Officers

President	James "Jim" Harris <a href="mailto:lapidarius@sbcglobal.net">lapidarius@sbcglobal.net</a>
Past President	Ray Hughes <a href="mailto:raider85@suddenlink.net">raider85@suddenlink.net</a>
First Vice President	Mike Chambers <a href="mailto:mchambers50@windstream.net">mchambers50@windstream.net</a>
Second Vice President	Mike Oglesby 806 798 4790
Secretary	David Turner <a href="mailto:turnerdc@sbcglobal.net">turnerdc@sbcglobal.net</a>
Treasurer	Tom Farrell <a href="mailto:tfarrellsrgwa@yahoo.com">tfarrellsrgwa@yahoo.com</a>
Raffle Manager	Glen Williamson <a href="mailto:glnwlmsn@aol.com">glnwlmsn@aol.com</a>

### Editorial

New Officers represent a changing of the guard. It is both exciting and sad. Exciting because new ideas and people will stir us up, rightfully. For me, too, exciting is the opportunity to get to better know Mike Chambers and David Turner through the board meetings and other activities.

I guess Larry Rogers will not be at the board meetings so much. Larry, a fellow diabetic, recognized my immediate issue with blood sugar (a lack of it) at the Civic Center year before last. He bundled me into his vehicle and carried me to the fish house on Ave Q. I don't know anyone who does not like Larry Rogers. I'll miss seeing you at those board meetings. Thank you, Larry.

When Ray asked me to step in to do the newsletter because of all of Tyler's issues, I was adrift. Tyler Woods provided the nucleus of information I needed, and Charles Swift has always kept me abreast membership and visitor information. I in turn would send Charles a file with membership information. Sometimes I had to remind Charles and many times he patiently pointed out my errors. Thank you, Charles.

Ray, you are not really gone from the board, but for the trust you had in me, Thank you, Ray.

### President's Letter

Well folks it has been an interesting year serving as your president. I have enjoyed serving as your president and I am especially looking forward to being your past president. I have worked with an outstanding Board of Directors and they have done a great job in taking on some daunting administrative tasks and preparing the club to meet the demands of the future. The incoming officers are also eager to serve you and make your woodturning experience the best that it can be. I think that the South Plains Woodturners are poised to continue growing both in talent and in membership.

The mentor program is underway and mentors have signed up to help beginners wanting to learn how to turn and more advanced turners learn new and challenging techniques. Please use this valuable resource wisely and be mindful of the time that the mentors are giving to this program.

Remember to support our Corporate Members and keep the chips flying.

Ray Hughes

**Show Your Colors**  
All Sizes to 5X  
**\$30**  
Long and Short Sleeve  
See Tom Farrell



### Christmas Party Set Friday December 10<sup>th</sup>

Bob Harbaugh has concluded negotiations with Hillcrest Country Club for December 10<sup>th</sup>.

Ticket sales for the holiday banquet will go on sale later in the year. Ticket prices will be \$25 each.

This is the event that brings us and our families together at a special time of year. Entertainment for the program has not been set. The board decided at the last meeting to forgo the band.

Some exchange of turned items as has been usual will be included in the party.

Additional information will be announced later.

## May Gallery

Vicki Oglesby exhibited two new Lidded Finial Boxes at the May Gallery. Each was competed in April 2010.

The larger box, shown to the right of the picture was turned from a banksia pod. The graceful finial was turned from African black wood.



Vicki crafted the smaller box to the left side of the picture from red wood burl. The delicate finial was turned from ebony.

Mike Oglesby, recently laid up with bilateral knee rebuilds, still completed this exquisite red mallee burl bowl, entitled, *Hard Times*.



Red Mallee, for any not familiar with it is akin to eucalyptus, and it hails from Australia. Its full name is *euclyptus Oleosa*.

Keith Hughes, our May demonstrator, brought up this gorgeous long stemmed goblet. It is turned from cherry. Keith completed this in January this year.



May Gallery Continued on Page 4

## Member News

**Mike Oglesby** will have a one-man show at McPherson Cellars at 1615 Texas Avenue as a part of the First Friday Art Trail on June 4, 2010. The Art Trail runs from 6 to 9 pm.

One can catch the trolleys at any Art Trail location, but the folks at the Louise Hopkins Underwood Center for the Arts (LHUCA) recommends people start there at 511 Kentucky.

Mike will also appear on the local FOX Channel 34 on May 27<sup>th</sup> at 8 to 8:30 am.

**John Franklin** routinely has pieces on display at Art on Texas Avenue. Currently featured is his piece, *Girasol*, a platter that won third place in the most recent Lubbock Arts Festival juried show.

Art on Texas Avenue is a part of the First Friday Art Trail, but one can see John's work from 11am on June 4<sup>th</sup> or anytime the gallery is open.

**Tom Farrell** will appear on the June 23<sup>rd</sup> broadcast of Tim Yoder's *Woodturning Workshop* at 1:00 pm on KTXT, Lubbock's public TV affiliate. The episode will feature metal spinning. Members will remember the excellent demo Tom gave the club on metal spinning last year or some of us caught his demo at SWAT in Wichita Falls.

Tom will also appear on the local FOX channel 34 on June 24<sup>th</sup> 8 to 8:30 am.

**Dick Markham** became the only member of the South Plains Woodturners to have *never* missed a club meeting when Mike Oglesby missed his first meeting due to the knee surgery. Great perseverance, Dick.

## Next Club Meeting

June 5th

At Target Sheet Metal  
In the wood shop

South Loop 289 (see map on page 7)

Demo: *Dualing Segments* by  
Larry Rogers  
and  
Randy Thorne

Meeting starts at 10:00, but come early. Help make the coffee and visit with other turners.

May Gallery(Continued from Page 3)

Randy Thorne was very busy in April producing his usual quality work.

At right is shown an impressive lidded bowl of figured walnut. Below is shown the inside of the bowl and lid.



At the right are two lidded boxes with finials turned out in April by Randy. The furthest right box is made from walnut and the finial is of pecan. All Randy's pieces shown here were finished by Deft® spray. The other lidded box has been constructed from orange tree, paduk and bloodwood.



Randy Thorne's final piece in the May Gallery is this segmented vase. Its segments and staves have been fashioned from walnut, ash and mahogany. All with some knowledge of the work involved in cutting, assembling, turning and finishing segmented work, not to mention a large lidded bowl have to ask. Randy, what did you do the rest of April?

I cannot wait for the Demo Randy and Larry will do at the next meeting.



May Gallery continued on Page 5

Mentoring Program

The South Plains Woodturners Board is committed to develop a quality mentoring program. Among our club are members with great skills and techniques. Many are willing to teach the rest of us.

At the last meeting a sign up mentors and mentees was announced. The process may have been confusing. We sought to learn what processes and skills people needed and we tried to get our artists to volunteer to mentor. There may have been some confusion, because several of those who volunteered to mentor expected to get calls from some of the people listing a need for mentoring.

So, with the knowledge that many of our members with skills they could impart to us were not present at the May meeting we ask again.

Please volunteer to mentor our less skilled members. Near the end of this newsletter will be a sign-up sheet for mentoring.

For members who seek mentoring, **it will be your responsibility to make contact with the volunteers.** The Mentor list will be published in future newsletters. It will also be available on the club's future website.

Mentoring is many things to many people. It can be as simple as having someone to call for help with problem. Mentoring may be as complex as hands-on guidance in turning an object.

The process of woodturning is extremely complicated. It involves wood (or other material) selection, preparation for the lathe, mounting on the lathe, the wonderful shapeshifting process we call woodturning, the sanding and finally the finishing.

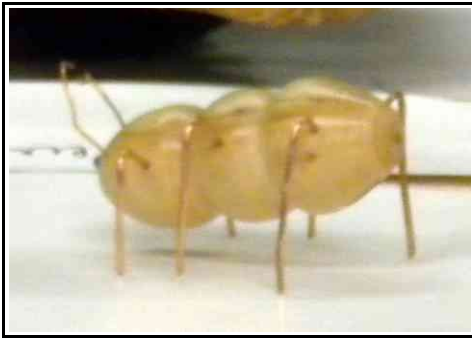
Mentoring may go even beyond those things. What tools to buy? Where to buy at the best value? Fitting the turner with the appropriate sized lathe. How to construct jigs to achieve predictable and redundant results. **Always** there may be safety issues that should be addressed.

<b>CLUB GLUE PRICES</b>	
Thin cyanoacrylate	\$7.00
Medium cyanoacrylate	\$7.00
Thick cyanoacrylate	\$7.00
Small Accelerant with pump	\$4.00
Accelerant Refill	\$8.00
cyanoacrylate solvent	\$4.00

**Glue available at meetings.**

**See Tom Farrell**

May Gallery(Continued from Page 4)



Kay Agnew has stuff crawling around. The maple ant at left is complete with copper legs. She is finished off with Behlen's Woodturner's Finish®.

Kay credits Kyle Dalton with helping her to construct and finish the striking segmented bowl at right.



The bowl is made from purple heart, blood wood and canary. She finished this with tongue oil.

Kay also brought in a maple snowman, stained dark and light that she had turned also in April. The editor regrets that no picture of Kay's snowman is available. Sorry, Kay.



If you spent endless hours in school making *moebius* strips instead of working on math problems, then sphericons are for you.

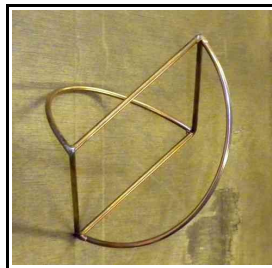
Dick Markham brought in three wooden sphericons constructed

from walnut and honey locust he recently constructed.

Dick also fashion the essential edges of a sphericon for us, seen at the right.

A sphericon is a polyhedra with one surface and two edges first created by a C. J Roberts, an Englishman.

Dick also created the double-end



cone on the track seen at left. It has been constructed from various woods.



Ron Butler brought up four pieces for the May Gallery. At right is his mesquite bowl completed in 2007. It has been finished off with a Hut Wax® treatment.



Ron Butler turned the trumpet shaped mesquite burl bowl below in 2009



Ron turned this mesquite bowl in 2008. It is finished like the one above.

Below is a fascinating mesquite jar that Ron enhanced with turquoise at some of the inclusions. Like Ron's other objects this has been finished with Hut Wax®.

Ron completed the jar in 2009.



Loy Cornett displayed the two pecan goblets at right. Both were turned in March. Each was completed with a lacquer finish.



Below is Loy's Natural Edged Elm bowl. This was also completed in March and received a lacquer finish.



# Revolutions

Please Support the Corporate Members  
+  
Our Founding Corporate Members



**Acacia Hardwoods**  
Rudy Valdez  
MANAGER  
4614 FM 1585 (19TH STREET)  
Lubbock, TX 79424  
806.794.5099 local  
806.794.3955 fax  
800.288.0629 toll free



**TEXAS TOOLS & EQUIPMENT**  
3102 Avenue A Lubbock, Texas 79404  
GREG WILLIAMS  
gew@texas-tool.com  
Phone: 806.763.1641  
Fax: 806.763.1685

## Corporate Members



KENT SHEPHERD

PHONE: 806-687-4905  
FAX: 806-687-4950  
SRSTOOL@AOL.COM  
WWW.SRSTOOLSUPPLY.COM

8116 W. 19TH STREET  
LUBBOCK, TX 79407



**TARGET**  
SHEETMETAL & MANUFACTURING, INC.  
Mike Oglesby  
Home: 806 795-9100  
Fax: 806 745-8582  
E-mail: tsmmfg@xanado.net  
WWW.TARGETSHEETMETAL.COM  
Office: 806 793-8571  
315 South Loop 289  
Lubbock, TX 79404

 **Pan-Tex**  
PLYWOOD & LUMBER CO.

116 E. 42nd Street  
Lubbock, Texas 79404

OFF: (806) 747-2561  
FAX: (806) 747-0314

