



Eli Avisera Class

South Plains Woodturners will host Eli Avisera for a one day class on July 15th at Target Sheet Metal in the wood shop.

Mr. Avisera is in the United States for the AAW Symposium, and he will be here for the one day class.

Class cost is \$100. Participation in the class is limited.



Tom Farrell's Scraper Demo



Tom Farrell Donates \$1,000 to Club Building Fund

Tom Farrell presented the club with a check for the Building Fund in the amount of \$1,000 during the June meeting.

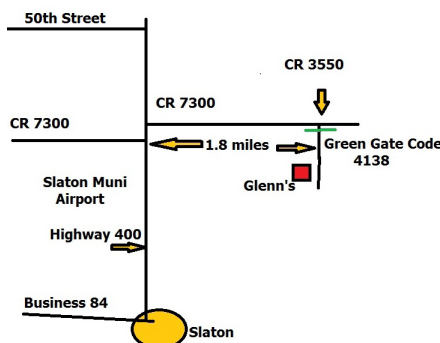
Tom's donation kicks off the clubs fund raising project. Remember, all donations are tax deductible.

Workshop at Glenn's

Glenn Williamson will host a workshop at his place on the canyon North of Slaton, Texas, July 16th at 9 am to 3 pm.

The only cost for the workshop is lunch.

Call Coy Hunt at (806) 832-8212 if you have other questions.



Tom Farrell demonstrated the use of scrapers to produce candlestick holders. In the image above, Tom works on the base for the candlestick holder. Scraping is a useful tool for any woodturner. At one time this technique dominated production woodturning in America where specially shaped scrapers were used for creating desired beads and coves. In many schools the more blunt scraping tools were perceived as safer than sharper cutting tools. Until the renaissance of woodturning beginning in the latter Twentieth Century, scraping almost was wood turning.

Better steel and better sharpening methods have almost crowded out scraping in contemporary teaching. Certainly shear scraping and use of a negative rake scraper are still the focus of many demonstrations today.

Continued on Page 2 (See Farrell)

SOUTH PLAINS WOODTURNERS OFFICERS

| | |
|--|---|
| PRESIDENT | RON BARNETT rbarnet3@gmail.com |
| PAST PRESIDENT | HARRY HAMILTON hhamilton@nts-online.net |
| FIRST VICE PRESIDENT | JIM BOB BURGOON jbburgoon@gmail.com |
| SECOND VICE PRESIDENT | MIKE OGLESBY 806 798 4790 |
| SECRETARY | DAVID HOEHNS allskewedup@gmail.com |
| TREASURER | CHRISTIAN JENSEN cwjensen@gmail.com |
| MEMBER AT LARGE (2ND YEAR) | PETE PIATAK pete@sptcnet |
| MEMBER AT LARGE (1ST YEAR) | BRADLEY BAKER bradleybaker22@yahoo.com |
| MEMBER AT LARGE (1ST YEAR) | BUDDY CHESSE lubbockcc@gmx.us |
| Raffle Manager | Glenn Williamson glnwimson@aol.com |
| Photographer | Ed Spense eddiestimo@prodigy.net |

southplainswoodturners.com

Club Calendar

| | |
|--|--------------------|
| July Club Meeting Willard Ellis | 7/04/15 |
| BOD Meeting | 7/6/15 |
| Beginners Class At Lubbock Garden & Arts Center | 7/9/15 |
| August Club Meeting (Demo: To Be Announced) | 8/1/15 |
| BOD Meeting | 8/3/15 |
| SWAT 2015 Waco, Texas | 8/21 to 8/23/15 |
| September Club Meeting (Demo: To Be Announced) | 9/5/15 |
| BOD Meeting | 9/7/15 |
| Set up for Lubbock Art Fest At Lubbock Garden & Arts Center | 9/11/15 |
| Lubbock Art Fest At Lubbock Garden & Arts Center | 9/12/15 |

Farrell



Tom Farrell's demo reminds us of the past and assures us that elegant form and clean surfaces are possible using scrapers alone.

Revolutions © is the newsletter for the South Plains Woodturners, Inc., a non-profit organization dedicated to promoting the craft and art of woodturning. **Revolutions** is published each month at Lubbock, TX. The South Plains Woodturners is affiliated with the American Association of Woodturners and The Southwest Association of Turners. Please direct any questions or comments about **Revolutions** to the editor: David Hoehns. 806 789-5108 allskewedup@gmail.com

Franklin at Buddy Holly

John Franklin's *The Natural Beauty of Wood* runs through Aug. 23 At the Buddy Holly Center, 1801 Crickets Avenue. John's work features pieces mad from mesquite, cottonwood, hackberry, and Manzanita. The Center is open Tuesday through Saturday 10 am to 5 pm.

June Show'N Tell



Ron Barnett acquired some buckeye burl, and the three pieces shown above are the result. Ron finished these three pieces in May.



Above, Randy Thorne discusses his segmented bowl. It contains maple, blood wood, walnut, padauk and pecan. Thorne also exhibited the spaulted boxelder pepper mill at right. Randy completed the mill in mid-May, the segmented piece was finished just in time for the club meeting.



At left Larry Rogers shows his segmented bowl. It is comprised of wenge, cocobolo, tiger wood, maple and quina. In the image above the other

pieces include at top left a lidded box made of tulip wood and eucalyptus. At far left is Rogers threaded ash box. Next, the segmented lidded box is a combination of bubinga and maple. At right Larry shows a cocobolo box with threaded lid. All pieces were completed in April.



Willard Ellis, above, shows a dyed canary wood twig pot. Willard used food dye. His second twig pot, *One for All*, is made of mesquite and maple.



Randy Hamilton exhibits his Carolina wren on a bucket, a product of basswood and tupelo.



Ron Dutton's take on twig pots is a curly maple form with a bubinga finial. He has suspended a cruciform from the finial. At right is a segmented bowl with lid. Ron combined maple and walnut in then bowl.



Gordon Graves has been bitten by the segmenting bug. The two bowls combine oak with maple. Gordon's closed form uses walnut and maple.



In the image at right Ron Butler holds *Thunderbird*, a walnut and maple segmented hollow form. Butler's larger vase is constructed from some three hundred-plus pieces of bird's eye maple and padauk.



At right Buddy Compton shows *Flame*, a boxelder maple bowl. Its finish is lacquer, and Buddy finish it in June. The bowl at left, *Wormy*, is honey locust. It was finished in June, too.



Jim Bob Burgoon holds the book-matched mesquite twig pot with African blackwood trim and base. Not pictured is a mesquite and turquoise pen.



At left David Hoehns' *Red Pagoda*, is a two-chambered box. Hoehns says the box is a prototype piece.



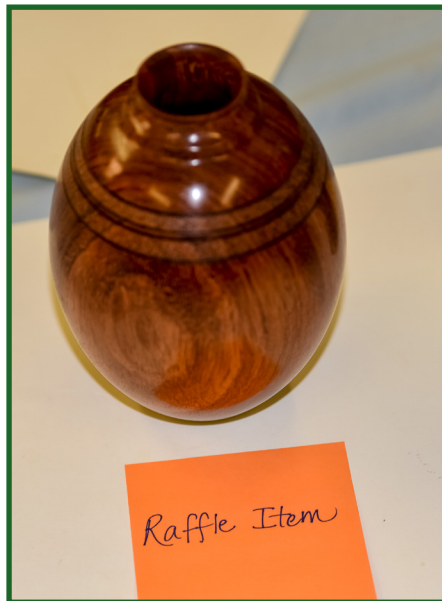
Below Wes Palmer holds twig pot at lower left is Palmer's turquoise enhanced bowl.



Wally McKee produced a wooden Frisbee. He said it is not intended to be thrown. The center piece reads "Made For Dustin McKee By Papa 2015"



June Raffle Items



Our Founding Corporate Members



Acacia Hardwoods
Steven Hernandez

4614 FM 1585 (1585th STREET)
Lubbock, TX 79424

806.794.5099 local
806.794.3955 fax
800.288.0629 toll free



TEXAS TOOLS & EQUIPMENT
3102 Avenue A Lubbock, Texas 79404

GREG WILLIAMS Phone: 806.763.1641
grew@texas-tool.com Fax: 806.763.1685

Corporate Members

Why pay a lot for storage?
AFFORDABLE
R.V. STORAGE & SHOP'S

130th & Frankford Ave.
(806) 698-1598

Trent & Josh



TARGET
SHEETMETAL & MANUFACTURING, INC.
Mike Oglesby

Home: 806 795-9100 Office: 806 745-8581
Fax: 806 745-8582 315 South Loop 209
E-mail: targetsheetmetal@att.net Lubbock, TX 79404
WWW.TARGETSHEETMETAL.COM



RETOOL

5004 50th Street
Lubbock, TX 79414
(806) 792 - 3721



ALaser's Touch
PRECISION LASER ENGRAVING

UNIQUE AWARDS FOR ANY EVENT!
AWARDS * PLAQUES * CRYSTAL * GLASS * NAMETAGS
PENS * CLOCKS * DESK ACCESSORIES
INDUSTRIAL PARTS MARKING

Jeff McKinnon
Owner

5135 C 69TH (806) 783-0999
LUBBOCK, TX 79424 FAX (806) 783-0748

WWW.ALASERSTOUCH.COM
JEFF@ALASERSTOUCH.COM

Club Benefactor



CRAFT SUPPLIES USA
THE WOODTURNERS CATALOG
woodturnerscatalog.com • 1-800-551-8876

