

# Revolutions

Vol 7, No. 6

June 2013



## Chip Carving Demo

Dan Rankin's demonstration at our June meeting was a departure from our routine woodturning demonstrations in that Dan is a chip carver. He showed us some of his work with pictures and some in person. Most interestingly, he brought along some practice pieces marked with his patterns such as the one shown here.



Dan let those of us who were interested do some hands-on work with the practice pieces. Using what is called a chip knife, one makes three cuts into the bass wood along the black lines. These, called triple cuts are one of three basic elements of chip carving. Straight and curved lines are the other two elements. Together,

these elements make up chip carving.

Continued on Page 4

## New Officers Installed

During the June regular meeting, President David Hoehns gave a brief State of the Club Address before handing the gavel to the new President, Jim Bob Burgoon.

President Burgoon introduced the new BOD: 1<sup>st</sup> Vice President, Harry Hamilton; 2<sup>nd</sup> Vice President, Mike Oglesby; Secretary, Ron Barnett; Treasurer, Bob Herman, Member at Large, Willard Ellis; and Past President, David Hoehns.

President Burgoon, who served previously as Treasurer, presented a report of club finances.

## Bowl Making Workshop

The June Bowl Making Workshop at Glenn Williamson's shop brought together experienced turners with newer members for a day of hands-on learning experiences.

Tom Farrell demonstrates the preparation of jam chuck to enable completing the bottom of a bowl to Willard Ellis and Mary Salyers.

All the bowl blanks were obtained from Acacia Hardwood, and Jim Bob Burgoon prepared the blanks from Ash.



Mike Oglesby shows some of the finer points of the push cut to Averette Lidzy. Mike is using Glenn's Oliver lathe.

Those attending the workshop, ordered pizza for lunch.

## Contents

Club Officers	2
President's Notes	2
SWAT Scholarship	2
Next meeting	2
Burls of Wisdom	3
Club Calendar	3
Regional Demonstrators at SWAT	3
Editor's Notes	3
June Gallery	4
Markham Made	5
For Sale	5
Take it. For What it is Worth	6
Corporate Members	8

## Beginner Class On-Going

Our club's second class of the year for new and inexperienced wood-turners is being held at Jim Bob Burgoon's shop on South Frankfort. The six week class consists of five students.

Continued on Page 7 (See Class On-Going)

**Revolutions**© 2013 is the newsletter for the South Plains Woodturners, an organization dedicated to promoting the craft and art of woodturning. **Revolutions** is published each month at Lubbock, TX.

The South Plains Woodturners is affiliated with the American Association of Woodturners and is a board member of The Southwest Association of Turners.

Please direct any questions or comments about

**Revolutions** to the editor: David Hoehns  
806 789-5108 allskewedup@gmail.com

Mailing address for club **P. O. Box 65428**  
**Lubbock, TX 79464**

**South Plains Woodturners Officers**

- President **Jim Bob Burgoon**  
jbburgoon@gmail.com
- Past President **David Hoehns**  
david.hoehns@att.net
- First Vice President **Harry Hamilton**  
hhamilton@nts-online.net
- Second Vice President **Mike Oglesby**  
806 798 4790
- Secretary **Ron Barnett**  
rbarnet3@gmail.com
- Treasurer **Bob Herman**  
bherman@nts-online.net
- Member at Large **Willard Ellis**  
willardellis@yahoo.com
- Raffle Manager **Glenn Williamson**  
glnwlmson@aol.com

**Notice from the BOD**

The South Plains Woodturners Board of Directors reminds Every member that the Board meets on the Tuesday following the Saturday regular meeting. The meetings are open to all.

Minutes of the meetings along with a monthly Treasurer's report is available from the Club Secretary, Ron Barnett.

**Dues for 2013-2014 Year are payable now.**

**Annual Dues \$30**  
**Household Member \$15**

**Scholarship to SWAT Available Now!!**



**If you have never been to SWAT**  
**You are eligible to win a scholarship**  
**And Banquet Ticket.**

**Give your name to a club Officer**  
**Before July 9<sup>th</sup> BOD Meeting**  
**Must be a member of the club to Enter.**

**Next Club Meeting**

**July 6<sup>th</sup>**

**At Target Sheet Metal**

**315 South Loop 289**

**In the wood shop**

**Enter via the West door near rear**  
**South Loop 289 (see map on last page)**

**Demonstration:**

**Tom Farrell**

*Introduction to Airbrushing*  
*for Woodturners*

Meeting starts at 10:00, but come early. Help make the coffee and visit with other turners.

**President's Notes**

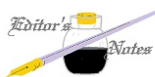
As SPW enters its 8<sup>th</sup> year of existence, I feel indebted to all those who have spent countless hours taking care of the day-to-day operations of our club. I have a special place in my heart for our founding fathers: Bob Harbaugh, Charles Swift, Glenn Williamson, Dick, Markham, and Mike Oglesby. Without their dedication, we would not be enjoying the association we have today. I admit before the foundation of our club, I wished there was a venue to exchange ideas and techniques about woodturning.

I would be remiss if I did not thank the Officers who have served us this past year on the Board of Directors. David Hoehns, an amazing organizer, joins our illustrious list of Past Presidents. Bob Herman, who did a remarkable job of scheduling demonstrations, tops my list of 1<sup>st</sup> Vice Presidents. Harry Hamilton, who held the Board's feet to the fire about fiscal responsibilities did an outstanding Job as Secretary. Bob Harbaugh, Past President, had the nomination recommendations done in record time. Willard Ellis, our Member at Large, really opened the Board's eyes to opportunities to serve. Glenn Williamson has done an excellent job of maintaining and expanding our monthly raffle, which is the largest support of our club.

I am most thankful to Mike Oglesby. Without him, we would not have a place to meet. I often think what a drag it would be to clean my shop every month to have it presentable for a group such as ours. Please make a special effort to help out and police our area at the end of our meetings.

I feel honored to serve this group in the upcoming year and look forward to the new opportunities we will have.

Jim Bob Burgoon



The Editor's Notes are intended to be frequent features in *Revolutions*. The opinions that will be expressed here are those of the editor and of no one else.

Do not expect controversy. Instead here is where the editor will explain and describe the newsletter features. Challenges to the club are likely to appear here from time to time. There might even be one coming soon.

This month's issue marks the second time in a row with articles by Tom Farrell and Averette Lidzy. Dick Markham, too has contributed an article. Due to the length of Lidzy's insights into Larry's work, it is printed in two installments. Tom's feature discusses the significance and common sense value of the Golden Mean, a ratio of proportion that neuroscientists explain is hard wired into our human brain. As such it is vital that woodturners who produce three-dimensional objects understand or at the very least appreciate this ancient formula. Gary Meisner, creator of [www.phimatrix.com](http://www.phimatrix.com), an extremely intriguing software program that evaluates digital images for concurrence with Phi, the Golden Mean. In a future newsletter Phimatrix will be examined in more detail.

The elements of art have also been recently addressed in the latest *Journal of the AAW* where Betty Scarpino gave us a double dose of *Line* in excellent articles by Tania Radda and Jerry Bennett. Jerry is a member of the Gulf Coast Woodturners.



Interview with Larry Rogers  
By Averette Lidzy

**Woodturning with Larry Rogers**

**Influences** of woodwork, can easily be said to originate with his dad, who was a professional carpenter; and the South Plains Woodturners club. Other than that, his influences range from the numerous videos he has watched, and many books & articles read by him on the uses and techniques of the wood lathe. For Larry, even though he has made many other artful wood constructions, such as furniture, he prefers wood turning, since much less time & space is needed to make finished works of wood.

Continued on page 4 See Burls

Club Calendar

Date	Event
07/06/13	Regular Club Meeting Demonstrator: Tom Farrell <i>Introduction to Airbrushing for Woodturners</i>
07/09/13	Board of Director's Meeting
07/21/13	<b>Last Day for SWAT Reduced Registration</b>
08/03/13	Regular Club Meeting Demonstrator: Randy Thorne <i>Long-stemmed Goblets</i>
08/06/13	Board of Director's Meeting
08/22/13	Pickup SWAT materials Walk thru Sharpening Booth
08/23/13	<b>SWAT 2013</b>
08/24/13	<b>SWAT 2013</b>
08/25/13	<b>SWAT 2013</b>
09/07/13	Demonstrator: Michelle Kraft
09/07/13	Board of Director's Meeting
09/13/13	Set up at Garden & Arts Center
09/14/13	43 <sup>rd</sup> Annual Arts & Crafts Fall Festival At The Lubbock Garden & Arts Center 9:00 am. to 6:00 pm.
10/05/13	Regular Club Meeting Demonstrator: TBA
10/08/13	Board of Director's Meeting
11/02/13	Regular Club Meeting Demonstrator: TBA
11/05/13	Board of Director's Meeting
12/07/13	Regular Club Meeting Demonstrator: TBA
12/09/13	Board of Director's Meeting

**SWAT Regional Demonstrators**

This is the second article listing and describing SWAT 2013 Regional Demonstrators.

**Stacey Hager**

One of Texas turning's institutions is Stacey Hager. With several intricate and detailed articles in the *Journal of the AAW*, Hager has been a voice in woodturning for many years, demonstrating at SWAT several times over the years. This year he presents "Shapes and Proportions."

A retired teacher and former President of Central Texas Woodturner, Stacey Hager defined most of the hand-made lathe tools in use today in *Journal* articles in last decade: point tool, cove tool, half-round tool and narrow parting tool. With such an articulate woodturner, Hager's demo is a don't miss.

**Paul Coppinger**

Coppinger will provide a thorough discussion of finishing. His notes may be downloaded from a [Gulf Coast Woodturners](#) site. Just follow the link and click on the option [here](#) on the lower right portion of the page underneath Paul's picture. Coppinger's 18 pages of notes are a complete and thorough presentation of finishes.

Continued on Page 7 (See SWAT)

**Chip Carving** From Front Page

Chip carving may be as simple as a geometric arrangement of three cornered cuts or as complex as one's imagination allows.

Chip carvers use two knives. One is the essential tool, used to cut approximately 60-65 degree patterns, and the other knife is constructed so the end appears as a long triangle. This latter knife is basically stabbed into the wood in a rocking motion to produce a thin triangle in the wood. These stabs may be combined to develop more complex geometric patterns.

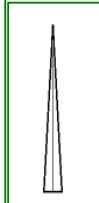
At right are Dan's knives. Notice the ogee like appearance of the handle. This shape fits the carver's hand well. The blade itself suggests a hook appearance, but the cutting surface is straight. Most chip carvers will sharpen their blades without any



bevel, bringing the tip to an extremely fine point. This point is so delicate it may be easily blunted which, of course requires a complete resharping.

Dan Rankin told us he uses bass wood almost exclusively for chip carving. Use of this technique with honey locust for example seems equal to the labors of sisyphus.

What then, one may ask, is the use of chip carving to a woodturner? Actually, other chip carvers do use cherry. Sycamore seems a good choice for this technique also. Chip carving might just be the ticket to liven up the surface of mahogany, an otherwise monotonous surface. We were impressed that Dan's tool case was smaller than my first cell phone. Chip carving is a low-cost choice for selected surface enhancements.

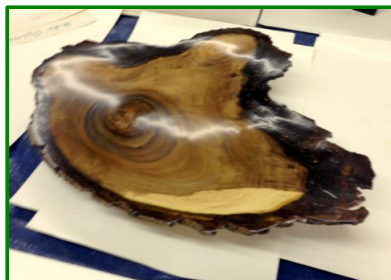


**June Gallery**



At left a beautiful platter by Mike Oglesby, taken while it was still on the lathe. Mike displayed this piece in the June Gallery.

Below is the piece as displayed by Mike.



Continued on Page 5 (See Gallery)

**Burls** From Page 3

*On the turning* of wood, it all started in Twin Falls, Idaho; the birthplace of all things wood-related for Larry. Besides his dad who built houses, and other useful wooden constructions Larry apprenticed with another professional carpenter from 1956-1959. Those were the last three years of high school, working full-time in the summers, and part-time during the school year.

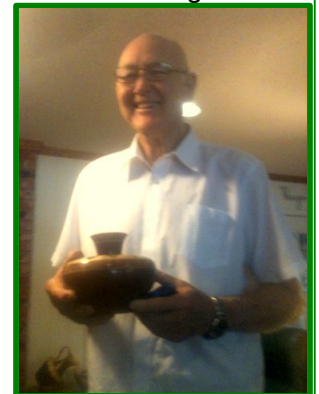
*So after graduating* Larry completed two years of undergraduate studies at Lubbock Christian Junior College in 1962. He completed his undergrad degree at Abilene Christian College in Sports Science in 1964. Whereupon Lubbock Christian hired him as an assistant basketball coach. While coaching, Rogers completed his masters at Tech Tech in Kinesiology. After LCC become LCU, they allowed Larry a sabbatical to complete a PhD in Kinesiology at Texas A&M by 1978. He returned to become Chairman of the Deptment of Sports Science at LCU for forty plus years. During most of his academic pursuits he has maintained a woodwork shop; but it was really in 1968 when he began doing wood lathe projects in earnest.



*Now returning* to the present in Lubbock, we're at his current workshop built about ten years ago. At the time he figured a 16' by 24' workspace would be more than adequate. Before long, however, it became quite crowded with equipment & tools. Within this abode of

wood chips sits his friend: a 1941 Delta Wood Lathe astride its heavy duty steel base. Originally being of a belt driven step-pulley design, he has since modified it with the expert help of Ray Hughes & Tom Ferrell. It now operates with an electronic control box that allows him to operate the lathe continuously without stopping from zero rpm to over 4000 rpm. Larry also did the same for a heavy duty Craftsman Lathe, also of forties vintage; which he has since given to a dear cousin in Houston.

*Concerning the actual* dimensions of his turned pieces he generally finishes out at 11.5 inches or less in diameter. Most everything he has made since 1991 has been segmented turned works using mostly exotic woods mixed with some native woods. Thus, given the exotic costs of non-native woods, he shifted to doing stacked segmented rings; and then later developing the open



lattice designs of his current work. Originally his segmented work started out as solid forms before turning to the open-segmented way.

➡ The Larry Rogers story will be continued in the July issue. ⬅

Gallery From Page 3



C. R. "Dick" Markham  
Lubbock



Above is whimsical presentation piece created by Jim Bob Burgoon for David Hoehns. The three sided rim represent Hoehns' three volunteer jobs: Past President, SWAT Director and newsletter editor.



Ron Barnett, our new club Secretary has been working with some burl.



At left David Turner exhibits a small bowl and pen with case.

At right Vicki Oglesby shows a small segmented bowl.



Continued on page 6 (See Gallery)

Markham Made: 70 Years at the Lathe

I was asked to write about some of the dos and don'ts of woodturning. Of course, as a writer I would make a fine truck driver! My aim would be not to scare or discourage, but to help prepare you to have fun. As you gain experience, you and some of the rules will become more relaxed.

I have spent most of my working life in different forms of wood working. At about age 14 I had my first wood turning experience. Most of the next 70 years was spent not turning, but scraping because I had very little guidance. Since the club was formed 7 years ago, I have learned more than all the other years put together.

★ *Your beloved shop is not your friend, but a bunch of stuff that is hot, heavy or sharp to be mastered.*

★ *Your breathing system is unforgiving and should be protected by good ventilation which could be a fan to keep the dust from your face. All kinds of masks are available.*

*Tool catches are common, but will diminish with experience. Unbalanced material has to be dealt with by speed control.*

★ *C.A. glue is not a very good wood glue but can have assorted value. Curing time varies so use caution restarting the lathe after filling cracks and flaws.*

★ *As you work, it will be frequently necessary to put sharp objects in your tailstock. As soon the spindle work is complete removing these objects saves on blood, bandaids and blasphemy.*

★ *I have served all the time I would want to from picking pieces off the floor. The training classes available now for the best methods of turning should help with that.*

There are many more dos and don'ts I haven't mentioned....and some I will discover along with you.

Take time to have fun,D. Markham

For Sale

Jim Bob Burgoon is selling two prepared rattle blanks for \$5.00.

Cherry

Call 806 773-0793





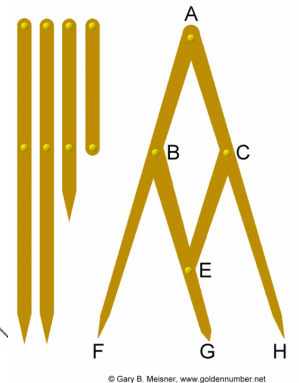
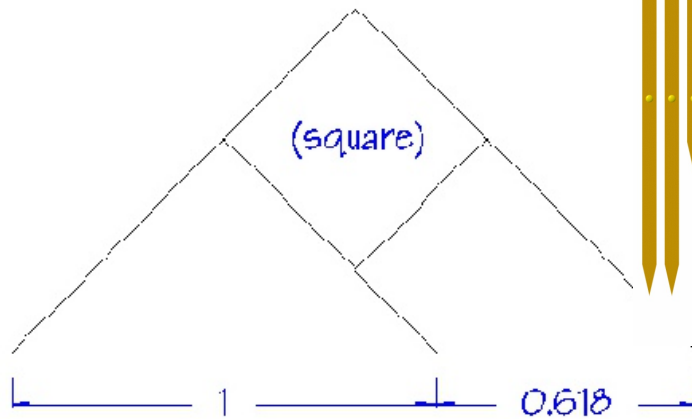
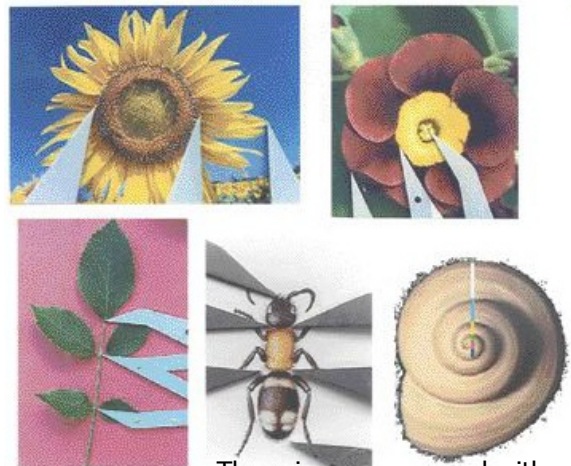
Take It  
For What It Is Worth  
Tom Farrell

How do you design a piece of woodturning? Many people will look at the piece of wood on hand and decide what to make. Or perhaps they already know what they want to make, they get a blank of the right size and begin. But, if you are unsure of proportion and design, I may have a solution. It is called the GOLDEN RATIO. The ratio can help you decide many questions such as: how big around it should be for its height, how big should the base be, where to put a design feature such as a bead or cove, what size should the cup be and how long should the stem be? Photographers and painters use the golden mean ratio to compose elements in the picture. What is this magic ratio that has been around since antiquity? That ratio is 1 to 1.618. This ratio is found in nature and objects we use every day. The height and width of a flat screen TV, a credit card, standard sized photographs, statues, lamps, spindles and plates. There is a device you can make that will give you the golden ratio. I used some slats sawn from a piece of bamboo flooring and used binding screws from Tandy Leather. Please note that the dimensions shown in the photograph are from pivot point to pivot. The actual length of piece AF is thus a little longer than the distance from the rivet at A to the tip at F in order to give the rivet some room to hold. The tips of the gauge should all come together when it's closed. These inch measurements are approximate. 340 mm = 13 3/8", 210 mm = 8 17/64", 130 mm = 5 3/16" and 80 mm = 3 5/32".



Golden Section Gauge

- AF = AH = 340mm
- BG = 210mm
- AB = AC = BE = CE = 130mm
- EG = 80mm



© Gary B. Meisner, www.goldenumber.net

These images are used with permission of Gary Meisner (© 2001-2013) at [www.goldenumber.net](http://www.goldenumber.net).  
And Dr. Eddy Levin at [www.goldenmeangauge.co.uk](http://www.goldenmeangauge.co.uk).

Gallery From Page 5

Below two segmented forms by Loy Cornett. At center a salvaged white oak box by David Hoehns donated to raffle.



Below a segmented vessel by Ron Butler with Thunderbird sections



### Rogers From Page 3

**Having no interest** in deep hollowing, most of his work has been small or large open faced bowls or wide-mouth lidded jars. The height of most of his work seems to be from ten to sixteen inches. Although he could work much larger; as the headstock unit & the pulley system can be rotated to either side of the lathe track to accommodate much larger works of wood. Which is, of course, the preferred style of Mike Olgesby.

**Regarding tool preferences** he uses both jaw chucks and faceplate chucks with variable grippers, along with self-made jam chucks of various designs. Since he began acquiring different makes of wood turning tools over several years, he has arrived at what he considers to be the ultimate wood lathe tools. That would be the Doug Thompson Line of Bowl Gouges, Skews, Scrappers and so on; above and beyond anything else he's used. Simply because this set of tools require very little time at the grinder to be sharpened with his Wolverine Jig to obtain a razor sharp edge. A tool, he states from experience, will out last other tools by 20 or more times. Thompson Tools use a special patented cryogenic annealing of platinum infused powdered carbide steel to form these rods of superior cutting power. And unlike many other brands these tools respond exceptionally well to hand dressing by stone or a diamond-metal honing board.

**In terms of finishes** Larry mostly prefers a semi-gloss acrylic lacquer to other types of coatings. Mainly because it forms a hard tough finish that's resistant to chipping and is extra moisture proof. The acrylic lacquer is also available in gloss, semi-satin, and satin finishes.



**A few special notes** are in order about some of the segmented works in his own private collection, created by him. In 2008 he made an unusual matching set of a Grecian styled Pitcher & Large Bowl of the Open-Segmented manner. Which featured a unique combination of native woods from Texas, Alaska, and International sources on different continents. This selection was made by Sarah Palin at the behest of Larry Rogers on behalf of LCU in honor of her speaking engagement held there. Another most beautiful work resides on the living room coffee table; a large closed-segmented lidded jar designed to emulate the cookie jar he became so familiar with in his childhood at his grandmother's house. The other important work, is his very first segmented design work created in 1991; a small vase of about 6 by 6 inches overall in size. Obviously Larry has had a long and interesting love affair with all things involving wood. And we wish his speedy return to all club functions; and many more years at the wood lathe. Let the chips fly where they may! He deserves our greatest gratitude, for he served selflessly as President of the South Plains Woodturners club from June 2008 until June 2010!!!

### SWAT From Page 3

#### Alan Trout

Trout works out of San Antonio's Tobin Hill, a historic district located on north side of downtown. His work is largely with composite materials such as burls stabilized with colorful resins. His demonstration at SWAT will cover CA finishing to closed vessels.

The piece at right entitled *Blue Raspberry Parfait* is from the artist's acorn cap series.

This series and others may be viewed at Trout's website Tobin Hill Studios.



#### Janice Levi

Current Past President of SWAT, Janice Levi will do one rotation on pyrography. Her presentations are always well thought out and complete.

The SWAT Regional Demonstrators descriptions will be completed in the July issue.

### Class On-Going (From Front Page)

The five students are Greg Freeman, Samuel Hawks, Ron Lowe, Christopher Robins and Trav Washburn. Instructor include Jim Bob Burgoon, Bob Herman, Jim Harris and David Turner with Willard Ellis and David Hoehns assisting. Below are some images from the class.



Please Support and Recommend  
Our Founding Corporate Members



**Acacia  
Hardwoods**

Rudy Valdez  
MANAGER

4614 FM 1585 (150TH STREET)  
Lubbock, TX 79424

806.794.5099 local  
806.794.3955 fax  
800.288.0629 toll free



**TEXAS TOOLS & EQUIPMENT**

3102 Avenue A Lubbock, Texas 79404

**GREG WILLIAMS** Phone: 806.763.1641  
gew@texas-tool.com Fax: 806.763.1685

And All Our Corporate Members



**RETOOL**

5004 50th Street  
Lubbock, TX 79414  
(806) 792 - 3721

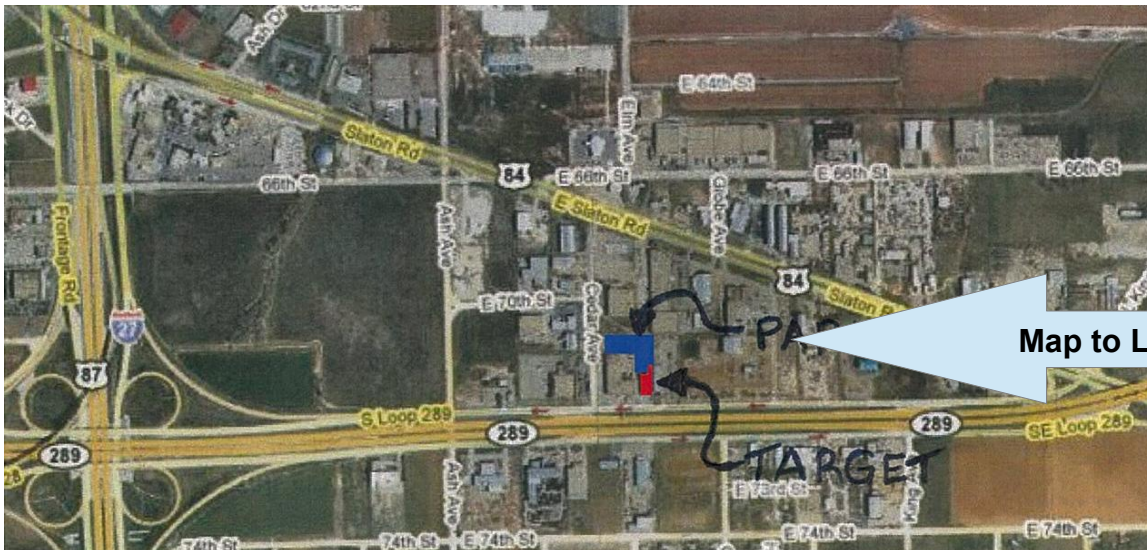


**TARGET**  
SHEETMETAL & MANUFACTURING, INC.

Mike Oglesby

Home: 806 795-9100  
Fax: 806 745-8582  
E-mail: targetsheetmetal@att.net  
WWW.TARGETSHEETMETAL.COM

Office: 806 745-8581  
315 South Loop 289  
Lubbock, TX 79404



Map to Locate Meetings