



The August Demonstration, conducted by Bob Herman was an excellent reprisal of Eugene Schlaack's Angel Christmas Ornament. Bob's demo focused on use of a spindle gouge, where Schlaack recommends use of a gouge. Bob, a member of our Beginner's Class Faculty, carefully explained his technique and theory as he developed this simple, yet elegant ornament.

Herman believes that a certain number of fundamental skills demonstrations are essential to retaining membership. Bob's previous demos have also supported this concept. Bob usually brings beautiful handmade tools, such as scratch awls which he donates to the club raffle.

It is time to consider Christmas ornaments whether for sale or as a gift. The Schlaack ornament will be a treasured heirloom for any family. Make some angels!



Christmas Party Planned

Tickets for the Christmas party will be on sale at the club meeting September 6th. Our party chair, Ann Hamilton has scheduled the party at the Lubbock Ladies Club, our usual Noel haunt for December 11th, a Thursday.

In this Issue

Club Officers	2
President's Letter	2
Next Club Meeting	3
For What It Is Worth	3
Show and Tell	3
August Gallery	4
SWAT Elects Officers	5
Beads of Courage	5
SPW at SWAT	6
Our Corporate Members	7



Featured speaker at the party will be Charles Armstrong, of NASA. Mr Armstrong will present NASA's vision of the future of space exploration. President Hamilton's affiliation with the Lubbock Board of Realtors has made this possible. Thanks to the Board of Realtors.

This is an opportunity to share with your children and grand children.

Tickets are \$25 each

Revolutions © is the newsletter for the South Plains Woodturners, a non-profit organization dedicated to promoting the craft and art of woodturning. Revolutions is published each month at Lubbock, TX. The South Plains Woodturners is affiliated with the American Association of Woodturners and The Southwest Association of Turners. Please direct any questions or comments about Revolutions to the editor: David Hoehns
 806 789-5108 allskewedup@gmail.com

Mailing address for club **P. O. Box 65428
 Lubbock, TX 79464**

SOUTH PLAINS WOODTURNERS OFFICERS

PRESIDENT	HARRY HAMILTON hhamilton@nts-online.net
PAST PRESIDENT	JIM BOB BURGOON jbburgoon@gmail.com
FIRST VICE PRESIDENT	RON BARNETT rbarnet3@gmail.com
SECOND VICE PRESIDENT	MIKE OGLESBY 806 798 4790
SECRETARY	DAVID HOEHNS allskewedup@gmail.com
TREASURER	BOB HERMAN bherman@nts-online.net
MEMBER AT LARGE	PETE PISTAK pete@sptc.net
Raffle Manager	Glenn Williamson glnwlmson@aol.com
Librarian	Robert Perkins robertp796@sptc.net
Photographer	Ed Spense eddiestimo@prodigy.net
Workshop Boss	Coy Hunt cghunt@windstream.net



**PRESIDENT'S
 LETTER**

Attending the SWAT symposium in Waco was an educational experience. Fifteen people from SPWT attended the convention. The directors of SWAT have done a wonderful job producing a convention at minimum expense. I managed to get there and back for just over \$300. Our own David Hoehns shouldered the responsibility of registering the attendees and acquiring the demonstrators. There were 825 people in attendance coming from all parts of the nation. SWAT vendors were happy because SWAT only charges ¼ of the fee per booth space as compared to other symposiums, and also the vendors are not being held ransom by labor unions. In other symposiums exhibitors are charged exorbitant fees by the unions to haul their wares in and out of the convention center. If SWAT continues to grow, space limitation in Waco may require that SWAT move to a larger city.

I had the opportunity to visit with Phil McDonald, executive director of AAW. Our conversation principally centered on how the local clubs can assist AAW in encouraging more local members to join AAW. We also discussed the role of technology in AAW's future. The information I gleaned from this conversation was:

1. We will see more services being offered to AAW members in the future and,
2. Out of necessity AAW must embrace the use of technology in its strategic plan.

As a result of SPWT breaking the ice in the use of webinar's, other clubs are beginning to explore the same medium. The Minneapolis Area Club is hosting Trent Bosch via webinar September 1st.

Harry Hamilton has interview all 6 of the AAW board candidates. The issue he raised with each candidate was

1. How was AAW going to encourage more individual club members to join AAW and
2. Is AAW going to take the lead in the use of technology to bring educational programs to individual clubs. Based upon the response of each candidate, Hamilton suggests our club endorse the following people.

Kenneth Evans, New York
Ron Browning, Florida
Greg Schramek, North Carolina

Harry Hamilton



Next Meeting

September 6th

10:00 a.m.

At Target Sheet Metal

Demonstrator:

Randy Thorne

Turning a Long-stemmed Goblet
(Unsupported)



Take it for
What it is
Worth

Tom Farrell

Show and Tell



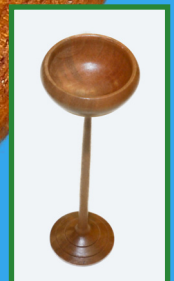
Green wood working is something woodturners can find very enjoyable. Before sawmills, wood drying kilns and lumber yards were common place; most wood working was green wood working.

I define green wood as any wood that is not KD, kiln dried. There are terms that I use to describe the amount of moisture in green wood. First is fresh cut or wet wood. *Wet Wood* is wood that is full of sap or moisture and will sling moisture in your face and on tools. This kind of woodturning can be refreshing on a hot summer day. *Green wood* is dryer than *Wet wood*. It is wood that Dale Nish used to describe as semi-dry. This semi-dry green wood is most attractive to wood boars and other insects, "boar candy" was Dale's term for it. Turning green wood is very enjoyable. Nice smooth cuts and long ribbons of wood are common when turning and there is much less dust than turning kiln dried wood.

Seasoned wood is wood that has reached equilibrium with its environment. It will not dry out any further without special drying treatment. Depending on where you live, seasoned wood can be between 10 to 30 percent moisture content. All green wood and to a smaller extent kiln dried will move or warp to some extent after turning. In the case of KD wood, when the interior is hollowed or the surface is turned, internal stresses in the wood are relived and the wood moves.

Continued on page 6

August Gallery



The August Gallery was smaller than usual as vacations and other interests eroded our attendance. Quality never paused as members exhibited some wonderful new pieces. All photography is by Ed Spence.

Beginning in the upper right Loy Cornett's *Dizzy Bowl* is an excellent rendition of a style developed by Tom Lohman, a glue-and-cut process. Loy's bowl is also the background image for this page. Loy used maple, walnut, purple heart, yellow heart and bubinga in the construction.

Continuing in a clock-wise manner, *Blacky II* by Mike Oglesby is a silver maple bowl dyed with transtint dyes and finished with lacquer.

Continued on page 5 (See Gallery)

SWAT Elects Officers

The South West Association of Turners conducted their annual Directors meeting during the 2014 symposium. The new President, Ken Morton, is a member of the Hill Country Turners. Our own Buddy Compton is the new Vice President. Dave Marshall, Wood Turners of North Texas, continues as Treasurer.

Two officers are new to the Executive Committee. These are Robert Schoenert, the new SWAT Secretary, and Ken Mays, the Second Vice President. Robert Schoenert is a member of the Alamo Turners. Ken Mays is a member of the Hill Country Turners.

Wayne Furr, who has done a wonderful job with the past two years as President, now assumes the title of Past President. Wayne is a member of the Central Oklahoma Woodturners Association.

Also the SWAT Board of Directors elected the nominating Committee for 2014-2015. The three are Ken Terrell, Dan Henry, and Wayne Furr. This group is prestigious in that all have served as SWAT presidents. They will develop the officer's slate for 2015-2016.

The Mid-year meeting has not yet been set, but it is typically held in January. This will be the working meeting for the SWAT Board of Directors.

South Plains Woodturners President, Harry Hamilton, has appointed David Hoehns to continue as SWAT Director. Member of the South Plains Woodturners with ideas to improve SWAT should communicate their thoughts to him now. Please don't wait until next Summer.

Agreements with Lead demonstrators for SWAT 2015 have been settled. These are:

Joe Herman
Brian McEvoy
Kurt Hertzog
Rex Burningham
Malcolm Tibbetts
Derek Weidman
Ed Kelle as *Alternate*

In the next few months, a call for demonstrators to fill the other fourteen demonstrator slots will be issued. Many South Plains Woodturners are capable of doing SWAT demos. Put together a project and develop a handout. David Hoehns will assist any member in developing a demo handout.

Gallery (From page 4)

Across the bottom from the right are four images of work by Randy Thorne. The first is a long-stemmed goblet of maple. Next left is a silver maple vase. Next Thorne shows a mesquite platter with turquoise inlay. For his final piece Randy has a ring box. The box is cedar while the lid is palm. All of Thorne's work was finished in July or August.

In the lower left corner Christian Jensen shows a lidded box made from Corian and seven pens made from either Corian, teak or walnut.

Looking upward, one may see Jim Coulson's exhibit. He presents two cedar pens with examples of cedar blanks cut in the same orientation as his two pens.

The image in the upper left corner shows two segmented hollow forms in Southwestern style by Ron Butler. The taller form on the right, *Diamond*, is an assembly of maple and purple heart. With *Zigzag* on the left Ron combined bloodwood with maple.

Beads of Courage

An increasingly popular activity by SWAT attendees is the production of SWAT lidded boxes for holding Beads of Courage used by children's hospitals for critically ill children.



Continued on page 6

For What It Is Worth From page 3

Wood movement, warping, is a lot more pronounced in green wood. Woodturners sometimes go to great lengths to dry out or cure wood without cracking or checking. Here is what works for me most of the time. I keep wet wood in a plastic sack until I can get to it, but not longer than two or three weeks. I then take it out of the plastic bag and use Anchor Seal on the cut surfaces. Then I put the wood down on a cut side on concrete and loosely cover it with a plastic bag. I check on this arrangement from time to time until I think it is safe to remove the bag. As I am turning I also apply Anchor Seal to the end grain and the long grain before I set the work aside to dry further. Keep green wood in the shade.

Happy Turning!

Beads of Courage From page 5

On the previous page the central image is of Scott Hackler's Castle of Courage. The other's are whimsical projects.

The Woodturners of Central Texas and Johnny Tolley produced the greatest number of boxes.

Two interesting pieces are by Andy Chen (left) and Bobby McCarley (right).



SPW at SWAT



Buddy Compton



Ron Barnett



Mike Oglesby



Tom Farrell



Tom Farrell

Founding Corporate Members



Acacia Hardwoods
 Rudy Valdez
 MANAGER
 4614 FM 1585 (SOUTH STREET)
 Lubbock, TX 79424
 806.794.5099 local
 806.794.3955 fax
 800.288.0629 toll free



TEXAS TOOLS & EQUIPMENT
 3102 Avenue A Lubbock, Texas 79404
GREG WILLIAMS
 gww@texas-tool.com
 Phone: 806.763.1641
 Fax: 806.763.1685

Corporate Members



RETOOL
 5004 50th Street
 Lubbock, TX 79414
 (806) 792 - 3721



TARGET
 SHEETMETAL & MANUFACTURING, INC.
 Mike Oglesby
 Home: 806 795-9100
 Fax: 806 745-8582
 E-mail: targetsheetmetal@aol.net
 WWW.TARGETSHEETMETAL.COM
 Office: 806 745-8581
 315 South Loop 209
 Lubbock, TX 79404

Why pay a lot for storage?
AFFORDABLE
 R.V. STORAGE & SHOP'S
 130th & Frankford Ave.
 (806) 698-1598
 Trent & Josh




ALaser's Touch
 PRECISION LASER ENGRAVING
UNIQUE AWARDS FOR ANY EVENT!
 AWARDS * PLAQUES * CRYSTAL * GLASS * NAMETAGS
 PENS * CLOCKS * DESK ACCESSORIES
 INDUSTRIAL PARTS MARKING
Jeff McKinnon
 Owner
 5135 C 69TH
 LUBBOCK, TX 79424
 18061 783-0999
 FAX 18061 783-0748
 WWW.ALASERSTOUCH.COM
 JEFF@ALASERSTOUCH.COM



CRAFT SUPPLIES USA
 THE WOODTURNERS CATALOG
 woodturnerscatalog.com • 1-800-551-8876

