

Revolutions

Vol. 6 No. 4

April 2012

NEWSLETTER FOR THE



Natural Edge Flat Bowl



Buddy Compton gave the club a great demo on turning the flat, natural-edged mesquite bowl from log blank. In the picture at left Buddy holds one of the examples of the step he takes to produce the bowls,

Buddy cuts flat sides on opposite sides of the log, drilling a hole in the approximate center on one flat side with a forstner bit the size of his spur chuck, a safety feature. After this Buddy puts the log between centers, turning a double step tenon. The larger tenon will hold the log during the shaping of the bowl. The smaller tenon helps hold the bowl during the final shaping of the bottom of the bowl.

Continued on page 4 (See Natural-edge)

Lubbock Arts Festival 2012

In planning for a year, after the club failed to secure a booth at the event in 2011, South Plains Woodturners were represented at the Lubbock Arts Festival at the Lubbock Civic Center.

The entire process felt at times like a cartoon centipede whose hind legs do not know the front legs have stopped walking. Thanks to Elizabeth Rigner we were able to install our booth in the large room instead of the front hall as originally expected. Civic Center staff quickly attended to our needs as always. Ancillary staff brought in for the event were helpful and knowledgeable. Special thanks go to the young ladies from Visit Lubbock who help us find our way and made us a dozen or so badges.



Many club members helped throughout the Festival. David Turner and Jim Bob Burgoon demonstrated for the wave upon joyful wave of

second graders.

Continued on page 4 (See Festival)

Bar B Que Swapmeet

Nothing says Texas like Bar B Que, spell it how you will. When people of like interests come together to share a meal and swap a tool or a lie.... Well then it must be Saturday May 19th at Glenn Williamson's place looking over the canyon. That is the date of the 1st Annual SPW Bar B Que Swapmeet.

Kay Agnew, the boss lady of this operation, suggests you might mosey in and tie up your horses about noon, but don't expect to eat until about 2:00 pm.

Parking at Glenn's is a bit scarce, so shuttle service will be provided.

Continued on Page 5 (See Swapmeet)

In This Issue

Club Officers	2
Presidents' Letter	2
Next Demo	2
April Gallery	3
Annual Elections	3
John Franklin Piece	3
Visitor Information	3
AAW Symposium Information	5
Our Corporate Members	7

Revolutions

Revolutions © is the newsletter for the South Plains Woodturners, an organization dedicated to promoting the craft and art of woodturning. **Revolutions** is published each month at Lubbock, TX.

The South Plains Woodturners is affiliated with The American Association of Woodturners and The South-west Association of Turners.

Please direct any questions or comments about **Revolutions** to the editor: David Hoehns
806 789-5108 sp.woodturners@att.net

Mailing address for club **P. O. Box 65428
Lubbock, TX 79464**

South Plains Woodturners Officers

President	George "Bob" Harbaugh grharb@att.net
Past President	James "Jim" Harris lapidarius@sbcglobal.net
First Vice President	Ray Hughes raider85@suddenlink.net
Second Vice President	Mike Oglesby 806 798 4790
Secretary	David Turner turnerdc@sbcglobal.net
Treasurer	Jim Bob Burgoon jbburgoon@gmail.com
Member at Large	Bob Herman bherman@nts-online.net
Raffle Manager	Glen Williamson glnwlmson@aol.com

Notice from the BOD

The South Plains Woodturners Board of Directors reminds every member that the Board meets on the Tuesday following Saturday regular meeting. The meetings are open to all.

Minutes of the meetings along with a monthly Treasurer's report is available from the Club Secretary, David Turner.

Member dues \$ 30.00 may be paid at meeting.



Proceeds from the Club Raffle pays for coffee, donuts and other club social events.

President's Letter

We had a booth at the Arts Festival last week and I thought it went very well. We had a good turn out from some of our members, and those who were there had a good time. Thanks to David Hoehns for a great job putting this exhibit together. Thanks also to those who took part in manning the booth.

May 5, will be election day for SPWT and I hope we have a good showing from our membership for this important meeting. We had planned to honor our " Outstanding Member" for this past year, but as yet I have had very poor response to my plea for nominations from the membership. Please don't wait for "George" to do it. George is asleep, I need your nomination. I have extended the time limit to April 30th. That should give everyone time to send me an email with your nomination. My address again is: grharb@suddenlink.net. If you don't have email, then call me at 806-784-0607. I need your help.

Don't forget the Bar-B-Que on the 19th of May at Glenn's. Kay Agnew has been working very hard to make arrangements for the food, entertainment, etc. A swap meet is planned along with the other festivities, so bring a tool or something you don't need any more and swap it for something you do need. This is shaping up to be a most enjoyable day for everyone, so make plans now to attend. I hope to see all of you at the May meeting,

Next Club Meeting

May 5th

At Target Sheet Metal

In the wood shop

Enter via the West door near rear

South Loop 289 (see map on last page)

Demonstration:

Ray Hughes

Lamp with
Stave Construction

Meeting starts at 10:00, but come early. Help make the coffee and visit with other turners.

Revolutions

April Gallery



Harry Hamilton's display in the April Gallery is also a demonstration in brief, showing the three stages of developing the base/handle for the glasses. Harry cut stemmed glass ware to fit the turned pieces.

Coy Hunt, a fairly new club member, shows his skills with these two very nice pieces. On the left Coy's segmented depiction of Native American pottery comprised of maple, walnut, oak, purple heart, becote, cocobolo, blood wood and wenge turned in 2010. To the right is Hunt's aspen bowl finished in March.



The collection exhibited at left is the work of Kay Agnew. It includes a walnut egg on the left, and banksia pod on the right. At center is Kay's *Egg McMuffin* an assemblage topped with what may be a maple egg.

At right Mike Oglesby's egg collection. The woods used are maple, walnut and *lignum vitae*.

Below are two dyed pieces by Mike. The hollow vessel on the left he calls, *bad oak*, is a March product.



The egg form is turned from Arizona cypress and hit with the transtint dyes. Mike finished this the day prior to our club meeting.

Club Elections

Club elections will be held at the May 5th meeting. The Nominating Committee has prepared a slate of candidates for your consideration.

Prior to the election, the floor will be open to hear nominations. At that time any member may nominate any Affiliated (co-member in American Association of Woodturners) member for any open position or any member promising to join AAW prior to June 2, 2012, the date for installation of officers. Before nominating anyone, please, be certain that individual is both willing and qualified to hold office.

The Nominating Committee's slate is:

President	David Hoehns
1 st Vice-President	Bob Herman
2 nd Vice-President	Mike Oglesby
Secretary	Harry Hamilton
Treasurer	Jim Bob Burgoon
At-Large Member	Willard Ellis

The at-large member is elected to a two-year term.

Franklin Piece in Juried Gallery



John Franklin had this wonderful segmented seed bowl in the Juried Gallery at the Art Festival. The yellow ribbon at the back is attached to a piece of hanging art, but John's work is blue ribbon in our book.

April Visitor

Welcome to Bobby Fiveash Sr., our visitor at the April meeting. Bobby lives here in Lubbock.

We hope you come back, Bobby.

Continued on page 4 (See Gallery)

Revolutions

Natural-edge (From Front Page)



Compton turns the bottom of these bowls between centers, exploring creative options as he works.

After he has worked the bottom, Buddy applies CA glue to secure the natural edge. Then he sands the bottom, filling voids with turquoise or mesquite dust.

Sanding through 400 grit follows,

At this point Compton mounts the piece in the four-jaw chuck, hollowing the bowl, sanding and filling voids as earlier.

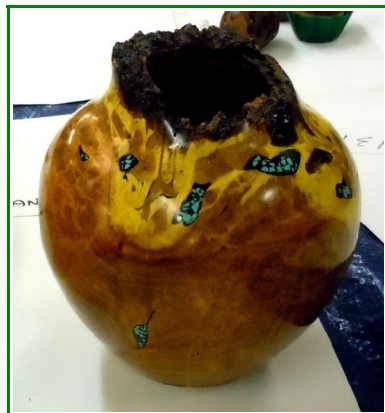
The completion of the bowl involves jam chucking the hollow bowl to remove chuck marks on the tenon on the bottom while the tail stock holds the smaller, more narrow tenon. Then Buddy removes the narrow tenon. After sanding the bottom, a finish is applied.



Club members watch Buddy's demonstration at right and above.

Gallery (Continued from page 3)

John Franklin exhibited the two natural-edge mesquite forms below. The vessel on the right has been turned from a burl, yielding fantastic grain patterns. The vase on the left has interesting occlusions. John filled voids with epoxy, using indial ink as a contrast for the turquoise inlance.



Continued on page 5 (See Show and Tell)

Festival (from Front Page)

Members worked the Art Festival in shifts.

Oren Perry, our youngest member demonstrates his box making skill while Bob Herman watches.



Two members merit special recognition: Jim Bob Burgoon and Pete Piatac. Jim Bob worked the booth most of every day during the Festival. Pete, the Alpha and the Omega, hauled the club trailer with pedestals and other club equipment to and from the event. Pete stopped by every day to see if we needed any help or equipment from the trailer.



David Hoehns, at left, turns a small bowl from wood brought by David Turner. The bowl took on a life of its own when Buddy Compton used it learn how to use paper decoupage as a surface enhancement from the artist demonstrat-

ing this technique near our booth.

Ron Butler exhibited some wonderful pieces including the curly maple salt and pepper mill in foreground and exotic thinwen or *Milletia pendula* mill to the back. The Burmese wood, in the wenge family was turned several years ago. When turned, Ron says it was a light wood, but now it has a purple patina.



Tom Farrell exhibited several pieces including this natural-edge mesquite bowl. Tom demonstrated in our booth and exhibited other work in with Clay Guild across from our booth.

Other members exhibiting in our booth were Buddy

Compton and Loy Cornett.

Loy demonstrated segmented turning for the Comanche Trail club in Midland Saturday morning, came to Lubbock to spend some time with us before returning to home in Lamesa Saturday afternoon. That's over four hours driving time.

Continued on page 5 (See Members)

Revolutions

Swapmeet (From Front Page)

Park on the side of CR 3550 after climbing the big hill. Golf carts will be available to shuttle everyone to the house. Remember, too, your catalytic converters will be hot after climbing the hill. Parking in tall grass may start a grass fire.

Bring lawn or camp chairs. Light tents or shelter screens could be handy.

Bring tools or anything you have to trade or sell.

See Show and Tell (From page 4)



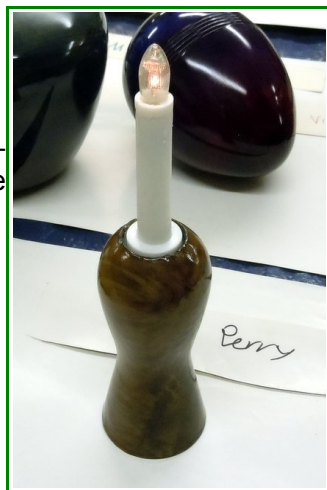
Something old. Something new. Dick Markham exhibited this recently turned hickory bowl. It has been fluted along the edges

Below in the foreground is Markham's winged and lidded box made from mahogany. Dick turned this elegant piece last year.



In the background is one of Dick's walnut sphericons, a form that began life as mobius strip without the hole. For further information see [sphericon](#).

Oren Perry exhibited a work-in-progress, an electronic candle made from rainbow poplar.



Members (from page 4)

Other members who lent essential help with the Art Festival include Randy Thorne, Harrell Ellis, Willard Ellis, Bryce Ellis, Dan Perry, Ron Barnett, James Harris, Bob Herman and Bob Harbaugh.

The event was the first time SPW sold members work, collecting both sales tax and a commission. Sales were not pushed but a low-key sign informed the public some pieces were for sale. Jim Bob Burgoon's Treasurer's report will detail this activity, but club's proceeds equal approximately one annual membership. This does not cover the cost of the event, but no one ever expected it to do this.

The Festival is where new membership is generated. Over sixty people signed up for the club newsletter whose email could be understood. Several of these are good candidates for membership.

Finally and most importantly, we showed the flag and cast seeds of discovery about us at the Festival. Eyes, young and wide-open, watched the lathe and the turners. They will not forget our craft and art. Those seeds may lay dormant for fifty years, but some will take life and root as new turners discover, again, the love of wood and craft.



Join the AAW for its 26th International Symposium to be held in San José CA on June 8-10, 2012

Early registration fee of \$250 continues through May 15, 2012.

Banksia Blossom



Continued on page 6 (See Gallery)

Revolutions

Gallery (From page 5)

Below is a natural-edged apricot bowl turned from whole log . Inside Randy exhibits a resin pen with a cross of purple heart and a green black click pen.



Dan Perry showed below the hand-carved maple letter-form entitled, *South Plains Woodturners*.



Below is a collection of african art from the collection of Charles Swift.



Loy Cornett put these two wonderful pieces in the Gallery. On the left below is oak and honduran rosewood urn. To the right an oak vase with a honduran rosewood ring.



Apologies to Larry Rogers.

Pictures of Larry's two kaleidoscopes and open segmented bowl are not available. The editor regrets the error.

At right two pieces by Tom Farrell. The elm and cocobola hollow form has been dyed with a red and green fade in and out pattern.



At right is one of Tom's copper rimmed bowls from the private collection of James Harris



Please Support and Recommend Our Corporate Members



Rudacia Hardwoods
Rudy Valdez
MANAGER

806.794.5099 local
806.794.3955 fax
800.288.0629 toll free

4614 FM 1585 (1107th STREET)
Lubbock, TX 79424



TEXAS TOOLS & EQUIPMENT

3102 Avenue A Lubbock, Texas 79404

GREG WILLIAMS Phone: 806.763.1641
gew@texas-tool.com Fax: 806.763.1685



Pan-Tex
PLYWOOD & LUMBER CO.



116 E. 42nd Street
Lubbock, Texas 79404

OFF: (806) 747-2561
FAX: (806) 747-0314



TARGET
SHEETMETAL & MANUFACTURING, INC.

Mike Oglesby

Home: 806 795-9100
Fax: 806 745-8582
E-mail: targetsheetmetal@att.net
WWW.TARGETSHEETMETAL.COM

Office: 806 745-8571
315 South Loop 289
Lubbock, TX 79404



RETOOL

5004 50th Street
Lubbock, TX 79414
(806) 792 - 3721



Map to locate club meeting



Revolutions



Revolutions
4218-88th Place
Lubbock, TX 79423

